

**School Curriculum
and Standards
Authority**



YEAR 12 INFORMATION HANDBOOK 2026

PART I: INFORMATION FOR ALL STUDENTS

Acknowledgement of Country

Kaya. The School Curriculum and Standards Authority (the Authority) acknowledges that our offices are on Whadjuk Noongar boodjar and that we deliver our services on the country of many traditional custodians and language groups throughout Western Australia. The Authority acknowledges the traditional custodians throughout Western Australia and their continuing connection to land, waters and community. We offer our respect to Elders past and present.

Before reading further, remember the following.

Abbreviation	Term
ATAR	Australian Tertiary Admission Rank
COAT	Common oral assessment task
DTWD	Department of Training and Workforce Development
EAL/D	English as an Additional Language or Dialect
EST	Externally set task
NAPLAN	National Assessment Program – Literacy and Numeracy
OLNA	Online Literacy and Numeracy Assessment
RTO	Registered training organisation
SCSA	the School Curriculum and Standards Authority
SPEA	School-based practical external assessment
the Authority	the School Curriculum and Standards Authority
TISC	Tertiary Institutions Service Centre
VET	Vocational education and training
WACE	Western Australian Certificate of Education
WASSA	Western Australian Statement of Student Achievement
WASN	Western Australian student number

In this handbook

- 2** Foreword
- 3** Important dates
- 6** Social media
- 7** Student portal
- 7** Adjustments and contingencies
- 8** WASSA and WACE
- 14** Make the most of Year 12
- 14** Stay healthy in Year 12
- 15** WACE Checker
- 16** Equivalences
- 21** School assessment
- 25** Examinations
- 30** Certification
- 32** Appendix A: Year 12 ATAR courses that have an external examination 2026
- 34** Appendix B: Interstate Language course examinations 2026
- 35** Appendix C: Materials required/recommended for written examinations 2026
- 38** Appendix D: Dictionaries approved for use in ATAR course examinations 2026
- 41** Appendix E: Dictionaries approved for use in Interstate Language course examinations 2026
- 42** WACE Refreshment



Student name:

WA student number:



Foreword

by **Juanita Healy**
Executive Director
School Curriculum and Standards

The School Curriculum and Standards Authority (the Authority) releases the Year 12 Information Handbook Part I in early March each year. I trust that by now you have settled into the business of this final stretch as you work towards your Western Australian Statement of Student Achievement (WASSA) and the requirements of the Western Australian Certificate of Education (WACE).

I'd like to take the opportunity to highlight three elements that will serve you well as a Year 12 student.

1. A clear plan

The end of the year may seem to be a long way off, but time is going to pass quickly. Your time as a secondary student will officially end in October; if you are enrolled to sit Australian Tertiary Admission Rank (ATAR) course examinations, you will do so as a candidate. Setting some goals and making a plan that you can review throughout the year is highly worthwhile. If your goals change – or become clearer – take the time to refine your plan. Keep moving towards the achievement of your goals!

2. A regular routine

Year 12 is a busy time, and a regular routine will help you meet your goals. A routine that supports you with allocating time for assignments, revision and study as well as sporting, work and the social aspects of friends and family will help you meet your goals. A routine that manages your time sensibly and well will help you stick to your plan, stay balanced and achieve your goals.

3. A support network

People are one of your most important resources as a Year 12. You are already a part of many communities through school, your family and friends, and the groups and clubs you may belong to. The teachers, student service team and other staff at your school have an important role to play in your network. It makes sense to reach out to them if you have questions or concerns throughout the year.

This handbook provides all Year 12 students and their support networks with information about the general business of Year 12. You should be aware that requirements and procedures can change and you need to know what is in place for this year. For example, the C grade equivalent for ATAR courses was introduced in 2025.

Use this handbook to make informed choices as a Year 12. Take time to read it. Check it when you have questions.

Staying on top of your workload, keeping your goals in mind and reaching out if you need help are all important. If you find you are overwhelmed, let people know and ask for support. If you have questions about your enrolment, assessment and the like, or need further advice and information, begin with your teachers and the support staff at your school. Talk with the people in your support networks. Take care of yourself and your friends.

As you progress through this final year of school, remember to draw on your plan, routine and network. All the best for 2026. ■



About this handbook

The Year 12 Information Handbook is provided in two parts, with Part I for all Year 12 students, including information about:

- key dates that are important for you this year
- what is involved in the WASSA and the WACE
- the student portal and the WACE Checker
- equivalences and how they can count towards your WACE
- school-based assessment and how it works
- examinations (the focus of Part II, available in July)
- general advice on life as a Year 12 student.

Other useful places for you to go for information are:

- the student portal (<https://studentportal.scsa.wa.edu.au>), where you should do things like check your enrolments and general details, complete your Student Declaration and Permission and, if relevant, access your examination timetable/s
- the WACE Checker on the student website homepage (<https://wacechecker.scsa.wa.edu.au>), which is a tool for you to check on your progress towards your WACE and inform your decision making if you consider changing your enrolment
- the student website (<https://student.scsa.wa.edu.au>), which collects much of the information covered in this handbook into the one place.

Important dates

Here are some key dates for Year 12 students.

For further details about other important dates, go to the *Activities Schedule* on the Authority website (<https://www.scsa.wa.edu.au/publications/activities-schedule>).

Date	Details
25–26 Feb	Online Literacy and Numeracy Assessment (OLNA) Term 1 Window – Writing component test.
25 Feb–13 Mar	OLNA Term 1 Window – Numeracy and Reading component tests.
26 Mar	Applications for equitable access adjustments for candidates with a disability sitting ATAR course practical and/or written examinations need to be received by the Authority.
27 Mar	Applications for online review requests from students not endorsed by their Principal for eligibility approval to enrol in the Year 12 ATAR EAL/D course in 2026 need to be received by the Authority. ATAR course practical examination requirements documents and relevant information published on the Authority website.
2 Apr	Last day to enrol as a non-school candidate for an examination. Last day for Year 12 students to change course enrolments. (After this date you can only withdraw.)
28–29 Apr	OLNA Term 2 Window A – Writing component test.
28 Apr–8 May	OLNA Term 2 Window A – Numeracy and Reading component tests.
11–29 May	Externally set task (EST) for each General and Foundation Year 12 course being delivered.

Date	Details
11 May–5 Jun	Common oral assessment task (COAT) for Year 12 ATAR EAL/D being delivered.
22 May	Application to sit ATAR course examinations outside Western Australia due.
10 Jun	2026 ATAR course examination timetables published on the Authority website.
12 Jun	Last day for schools to lodge applications for alternative format SPEA. SPEA timetable available.
15–16 Jun	OLNA Term 2 Window B – Writing component test.
15–26 Jun	OLNA Term 2 Window B – Numeracy and Reading component tests.
25 Jun	Enrolments in VET units of competency for Year 12 students due for upload to SIRS by the school.
3 Jul	Last day for late applications to sit ATAR course examinations outside Western Australia.
23 Jul	Last day for withdrawal of enrolment from ATAR courses with a practical examination component or a SPEA for Year 12 students to be uploaded by the school.
27–28 Jul	OLNA Term 3 Window A – Writing component test.
27 Jul–7 Aug	OLNA Term 3 Window A – Numeracy and Reading component tests.
27 Jul–11 Sep	SPEA to be conducted.
29 Jul	Last day for schools to lodge applications for alternative format ATAR course practical (performance) examinations.
10 Aug	Last day for withdrawal of enrolment from ATAR courses without a practical examination component for Year 12 students to be uploaded by the school. Last day for withdrawal of enrolment from General, Foundation, VET industry specific and Preliminary courses for Year 12 students to be uploaded by the school.
13 Aug	Last day for enrolments in endorsed programs for Year 12 students to be uploaded by the school.
27 Aug	Last day for Year 12 student declaration and permission details (relating to the release of personal information, use of school work and ATAR examination responses) to be completed in the Authority's student portal.
28 Aug	Front covers of the ATAR course examinations available on the Authority website.
31 Aug	Last day for student nominations for the 2026 Authority VET awards to be uploaded by the school.
7–8 Sep	OLNA Term 3 Window B – Writing component test.
7–18 Sep	OLNA Term 3 Window B – Numeracy and Reading component tests.
8 Sep	<i>Personalised examination timetables</i> for the ATAR course practical and written examinations available in the student portal.

Date	Details
22 Sep	<p>Date for receipt by the Authority:</p> <ul style="list-style-type: none"> • Design practical (portfolio) examination submissions • Materials Design and Technology practical (portfolio) examination submissions • Media Production and Analysis practical (production) examination submissions • Music composition practical (portfolio) examination submissions • Visual Arts practical (production) examination submissions.
23 Sep	<p>Date for receipt by the Authority:</p> <p>French, German, Hindi, Indonesian, Italian, Korean, Punjabi and Tamil: Background Languages <i>personal investigation interview sheet</i> examination submissions.</p>
26 Sep–4 Oct (Saturdays, Sundays and the public holiday included)	<p>ATAR course practical (performance) examinations for Aviation, Dance, Drama and Music. Commencement of ATAR course practical (oral) examinations for Chinese: Second Language, French: Background Language, French: Second Language, German: Background Language, German: Second Language, Hindi: Background Language, Hindi: Second Language, Indonesian: Background Language, Indonesian: Second Language, Italian: Background Language, Italian: Second Language, Japanese: Second Language, Korean: Background Language, Korean: Second Language, Punjabi: Background Language, Punjabi: Second Language, Tamil: Background Language and Tamil: Second Language.</p>
10–25 Oct (Saturdays and Sundays)	<p>Continuation of ATAR course practical (oral) examinations.</p> <p>Note: students sitting Interstate Language examinations need to check their <i>Personalised examination timetables</i> for dates.</p>
23 Oct	<p>Last day for schools to inform students in writing of their grades and school marks for all courses studied in Year 12.</p>
28 Oct–19 Nov	<p>ATAR course written examinations.</p>
29 Oct	<p>Last day for completed <i>Sickness/Misadventure Application</i> forms for ATAR course practical examinations to be received by the Authority.</p>
30 Oct	<p>Last day for students to lodge appeals against school assessment.</p>
24 Nov	<p>Last day for completed <i>Sickness/Misadventure Application</i> forms for ATAR course written examinations to be received by the Authority.</p>
Dec (Date to be confirmed)	<p>Year 12 students' results available online via the Authority's student portal (https://studentportal.scsa.wa.edu.au)</p> <p>Certificates and awards will not be available in the student portal until late January and mid-February 2027 respectively.</p>
Jan (Date to be confirmed)	<p>The WACE, ATAR course reports and WASSA for Year 12 students will be available online via the student portal in late January 2027</p>

Before you complete Year 12, please change your email address in the student portal to a personal email address. This will allow you to receive emails after you have left school and your school email address has expired.

You will be able to print your folio of achievement for 2026 by logging in to the student portal in late January 2027. It is important to remember to keep a copy of your login and student password details. The School Curriculum and Standards Authority Exhibitions and Awards ceremony will be held in February 2027.



Social media

Get the latest information about the WACE, WASSA, examinations and important dates.

The Authority has two Facebook pages. We recommend our general Facebook page as the most relevant for Year 12 students and as a way to contact us if you have questions.

- <https://facebook.com/SCSAWA> is for students in Years 10, 11 and 12, their parents, teachers, and community stakeholders. The focus of the page is on providing information to students working towards the WACE and a WASSA.
- <https://facebook.com/SCSAWateachers> is for teachers and community stakeholders. The focus of the page is on providing information to teachers delivering the Western Australian curriculum from Kindergarten to Year 12. Reminders about key dates as listed in the *Activities Schedule* are published on this page.

Response times

The Authority's office hours are between 8.00 am and 4.30 pm from Monday to Friday, excluding public holidays. Our social media accounts are formally monitored during these hours. Due to checking processes and other commitments, a response to a question or comment may not be immediate. Decisions on out-of-hours responses are made on a case-by-case basis and are dependent on staff availability. We always do our best to respond to you within two working days.

Community standards

We welcome your feedback, comments and questions through social media, but be aware that we moderate the pages.

The Authority treats its social media spaces as 'family friendly' and has a zero tolerance approach to rude language and abusive or offensive posts.

Contact us

Teachers, students and stakeholders are encouraged to use the Authority's Facebook pages to access information and stay in touch with the Authority.

If you prefer not to use Facebook, email info@scsa.wa.edu.au. ■

Student portal

Keep track of your information.

The student portal (<https://studentportal.scsa.wa.edu.au>) is a space for Year 12 students to check and access personal information that relates to their WACE.

You need to visit the portal to:

- check your personal details
- check your enrolments
- complete the Student Declaration and Permission (Year 12 students, and anyone enrolled in a Year 12 course, are expected to do this by **Thursday, 27 August 2026**)
- download a copy of your approved equitable access adjustments
- download a copy of the *Personalised practical examination timetable* which states the date, time, venue, and location of each practical examination you need to attend, from **Tuesday, 8 September 2026**
- download a copy of the *Personalised written examination timetable* which states the date, time and location for each written examination you need to attend, from **Tuesday, 8 September 2026**
- check your results
- download a copy of your sickness/misadventure outcome
- download your folio of achievement (WASSA, WACE, ATAR course reports and selected award certificates).

You need to have your WA student number (WASN) – which you can find out through your school – and a password to access the student portal. When you visit the student portal for the first time you will be prompted to change your password.

Keep your password safe! You will need it several times this year and again in January.

Helpdesk

If you have trouble accessing the student portal, you can email wacehelp@scsa.wa.edu.au (monitored from Monday to Friday between 8.00 am and 4.30 pm).

Note: the helpdesk staff will need you to provide proof of your identity. Due to security restrictions, information such as your WASN cannot be provided over the phone, nor can it be given to other people on your behalf. ■

Adjustments and contingencies

If any adjustments to processes in 2026 are required, the Authority will provide advice for students, teachers, school leaders, parents/guardians/carers and the community through the Authority website and circulars.

We encourage everyone to stay up-to-date with our latest communications and resources as they become available. ■

Emergency contact

The first time you visit the student portal you will be asked to provide a mobile number. While this step is not compulsory, we encourage all Year 12 students and examination candidates to provide a mobile number so that we can notify you via a group SMS if there are any changes to examination timetables and/or venues during the examination period. If you change your mobile number, you can edit this in the student portal.

WASSA and WACE

WASSA A WASSA is issued to all students at the completion of Year 12. It lists all courses, certificates and/or programs students have completed in Year 11 and Year 12. (Some students on accelerated programs with approval of the Authority may have completed some of these in Year 10.)

WACE Achievement of a WACE signifies that you have successfully met the breadth and depth requirement, the achievement standard requirement and the literacy and numeracy standard requirement in your senior secondary schooling.

Most students complete the requirements in two years, although the Authority will allow you to meet the requirements over your lifetime.

The WACE is recognised nationally in the Australian Qualifications Framework (AQF) and by universities, other tertiary institutions, industry, employers and training providers.

Requirements to achieve a WACE

Achievement of your WACE acknowledges that at the end of your schooling you have achieved or exceeded the required minimum standards in an educational program that has suitable breadth and depth.

To achieve a WACE in 2026, you must meet the following requirements:

Breadth and depth

- Completion of a minimum of 20 units, which may include unit equivalents attained through VET and/or endorsed programs. This requirement must include at least:^(Explanatory notes 1, 2, 3, 4, 5)
 - a minimum of ten Year 12 units, or the equivalent
 - four units from an English learning area course, post-Year 10, including at least one pair of Year 12 units from an English learning area course
 - one pair of Year 12 units from each of List A (arts/languages/social sciences) and List B (mathematics/science/technology).

Achievement standard

- Achievement of at least 14 C grades or higher (or the equivalent) in Year 11 and Year 12 units, including at least six C grades (or equivalents) in Year 12 units.^(Explanatory notes 2, 5 and 6)
- Completion of:
 - at least four Year 12 ATAR courses^(Explanatory note 5), **or**
 - at least five Year 12 General courses^(Explanatory note 7) (or a combination of General and up to three Year 12 ATAR courses^(Explanatory note 5)) or equivalent^(Explanatory note 8), **or**
 - a Certificate II (or higher) VET qualification^(Explanatory notes 9 and 10) in combination with ATAR, General or Foundation courses.

Literacy and numeracy standard

- Demonstration of the minimum standard of literacy and numeracy.^(Explanatory notes 11 and 12)

Maximum credit allowed from study in a single subject

You can achieve credit towards the WACE for a maximum of four different units in a subject, except in the case where a subject has a defined context (see sub-section 1.1 of the *WACE Manual 2025*). These four units may be from a combination of ATAR, General or Foundation courses.

Course unit completion requirement

When you have completed a pair of units, or a single Year 11 unit, you will be assigned a grade (A, B, C, D or E) by your teacher. To be assigned a grade, you must have had the opportunity to complete the educational program, or requirements, and the associated assessment program for the course.

To complete a Year 12 ATAR course a student must sit the ATAR course examination. Students who do not sit the ATAR course examination will not have a course mark or grade recorded on their WASSA, nor will they receive an ATAR course report.

Note: for ATAR courses with practical components, students must complete both the written and practical examinations.

Explanatory notes relating to WACE requirements

1. The breadth requirement can be met through ATAR, General and Foundation courses. The depth requirement can be met through ATAR, General, VET industry specific and Foundation courses, VET credit transfer and endorsed programs.
2. Of the 20 units required for a WACE, up to a maximum of four Year 11 units and four Year 12 units may be awarded as unit equivalents by substituting VET qualifications and/or endorsed programs. A student may choose to study VET qualifications and/or endorsed programs and may be awarded unit equivalents by substituting VET qualifications (up to a total of eight units) **or** using endorsed programs (up to a total of four units) **or** using a combination of VET and endorsed programs (up to a total of eight units, but with a maximum of four units with endorsed programs – two in Year 11 and two in Year 12).

A C grade equivalent will be applied for the pair of units in a Year 12 ATAR course by the Authority where a student has achieved a D grade and also achieved a moderated written school mark or ATAR course written examination mark at or above a specified cut point of approximately 40. There is no maximum number of Year 12 C grade equivalents that a student can receive.

3. Students are able to substitute the minimum number of course unit requirement with unit equivalents achieved through the completion of AQF VET qualifications at Certificate I, II, III and higher (see Section 4 of the *WACE Manual 2026*) and/or endorsed programs (see Section 5 of the *WACE Manual 2026*).
4. Students can repeat units. However, those units that have the same unit code, e.g. AEENG, and are repeated, do not contribute to the WACE requirements more than once.
Note: students who complete ATAR Units 3 and 4 prior to Year 12 and sit the examination cannot repeat these units until after they leave school at the completion of Year 12.
5. Students enrolled in a Year 12 ATAR course must sit the external examination in that course. If students do not sit an ATAR course examination and do not have an approved *Sickness/Misadventure Application* for not sitting the examination in that course (or approved absence for a SPEA), the pair of units completed in that year will not contribute towards any of the WACE requirements. Students who do not sit the ATAR course examination (or SPEA) will not have a course mark or grade recorded on their WASSA, nor will they receive an ATAR course report. For ATAR courses with practical components, students must complete both the written and practical examinations.
6. Both VET qualifications and endorsed programs can indirectly contribute to the WACE standard requirement of a C grade in at least 14 units. A C grade in a maximum of eight units (four in Year 11 and four in Year 12) can be replaced by unit equivalents from VET qualifications and/or endorsed programs. Of these eight unit equivalents, a maximum of four can be from endorsed programs (two in Year 11 and two in Year 12).
7. Foundation courses do not contribute to meeting the achievement standard with this option.
8. The completion of two or more endorsed program unit equivalents may be substituted for up to one General course for this requirement.
9. In the context of VET in the WACE, the term 'complete' requires that a student has been deemed competent in all units of competency that make up a full qualification.
10. The partial completion of a Certificate III or higher VET qualification may meet this requirement according to predetermined criteria (see Section 4 of the *WACE Manual 2026*).
11. The literacy and numeracy standard can be met either through the Online Literacy and Numeracy Assessment (OLNA) or by achieving the required level or above in the associated components of reading, writing or numeracy in the Year 9 NAPLAN tests. Students undertaking the OLNA will be required to satisfy both the reading and writing components in order to demonstrate the minimum WACE literacy standard.
12. If students do not demonstrate the literacy and numeracy standard by the time they exit secondary school, they can apply to the Authority to re-sit the assessment at any age.
Note: the WACE requirements may change over time and students studying towards the achievement of the WACE after they leave school will be required to meet the WACE requirements current at the time of the completion of their studies.

The achievement of a WACE

Courses, units, qualifications and programs from the following groups contribute to the achievement of a WACE:

- ATAR courses
- General courses
- Foundation courses
- VET industry specific courses
- VET qualifications
- Endorsed programs.

Courses

ATAR, General and Foundation courses are WACE courses. Preliminary course units do not contribute to the achievement of a WACE, but are reported on the WASSA.

WACE courses are grouped into List A (arts/languages/social sciences) and List B (mathematics/science/technology). Students studying for a WACE are required to select at least one Year 12 subject from each of List A and List B. Table 1 shows the WACE List A and List B subjects.

Schools choose to offer courses that meet the needs and interests of their students in line with the resources they have available.

You are able to select across a range of courses at cognitive levels to suit your abilities and post-school aspirations. If you think you will be heading to university once you finish Year 12, you should enrol in at least four Year 12 ATAR courses that can be used to calculate an ATAR. The ATAR score is used by universities as a selection mechanism. More information about the ATAR is available at the Tertiary Institutions Service Centre (TISC) website (<http://www.tisc.edu.au>).

In 2026, if you do not complete at least four Year 12 ATAR courses, you have the opportunity to complete five Year 12 General courses (or a combination of General and up to three Year 12 ATAR courses) to achieve the WACE. You will need to either complete at least five Year 12 ATAR General courses (or a combination of General and up to three Year 12 ATAR courses) or achieve a minimum of a Certificate II qualification to achieve the WACE.

ATAR, General and Foundation courses are offered at two year levels – Year 11, comprising Units 1 and 2, and Year 12, comprising Units 3 and 4. The different certificates (I, II and III) available through VET industry specific courses are allocated credit across the two year levels upon completion.

For ATAR, General and Foundation courses:

- the two Year 11 units are typically studied and reported to the Authority as a pair, but where a single unit is studied it is reported separately
- the two Year 12 units **must** be studied and reported to the Authority as a pair.

Permission for a student to change courses is a school decision. For you to achieve course unit credits, a change can only be made early in Year 12, before the cut-off date set by the Authority, which is **Thursday, 2 April 2026**.

Programs

There are three types of programs which can contribute to the WACE.

VET

VET qualifications are for students wishing to participate in nationally recognised training. VET enables students to acquire workplace skills through nationally recognised training described within an industry-developed training package or an accredited course. A VET qualification is issued by a registered training organisation (RTO). A Certificate II or higher is one of the range of requirements for achieving a WACE. These qualifications can contribute to the WACE as unit equivalents or course units.

Endorsed programs

These programs provide access to areas of learning not covered by WACE courses or VET programs and contribute to the WACE as unit equivalents. Endorsed programs are for students wishing to participate in programs which are delivered in a variety of settings by schools, workplaces, universities and community organisations.

Workplace learning

Workplace learning (ADWPL) is an Authority-developed endorsed program that is managed by individual schools. To complete this program, a student works in one or more paid or unpaid workplace/s to develop a set of transferable workplace skills.

Literacy and numeracy

You must demonstrate that you have met the minimum standard for literacy and numeracy, which is based on skills regarded as essential for individuals to meet the demands of everyday life and work.

These skills are described in Level 3 of the *Australian Core Skills Framework* (<https://www.dewr.gov.au/foundation-skills/australian-core-skills-framework-acsf>).

Table 1: WACE List A and List B subjects for breadth of study**LIST A (ARTS/LANGUAGES/SOCIAL SCIENCES)**

Code	Subject
AIS	Aboriginal and Intercultural Studies
ABL	Aboriginal Languages of Western Australia
AGB	Agribusiness
HIA	Ancient History
ARA	Arabic [#] (Year 12 only)
AUS	Auslan [#]
BME	Business Management and Enterprise
CAE	Career and Enterprise
CEM	Careers and Employability
CFC	Children, Family and the Community
CBL	Chinese: Background Language [#]
CFL	Chinese: First Language [#]
CSL	Chinese: Second Language
DAN	Dance
DRA	Drama
ECO	Economics
ENG	English
ELD	English as an Additional Language or Dialect
FBL	French: Background Language [#]
FSL	French: Second Language
GEO	Geography
GBL	German: Background Language [#]
GSL	German: Second Language
HEA	Health Studies
HEB	Hebrew [#]
HBL	Hindi: Background Language [#]
HDI	Hindi: Second Language
HAS	Humanities and Social Sciences in Action

LIST B (MATHEMATICS/SCIENCE/TECHNOLOGY)

Code	Subject
ACF	Accounting and Finance
AST	Agricultural Science and Technology
APS	Animal Production Systems
AIT	Applied Information Technology
AET	Automotive Engineering and Technology
AVN	Aviation
BLY	Biology
BCN	Building and Construction
CHE	Chemistry
CSC	Computer Science
DES	Design
EES	Earth and Environmental Science
EST	Engineering Studies
FST	Food Science and Technology
HPO	Health, Physical and Outdoor Education

Code	Subject
INB	Indonesian: Background Language [#]
IND	Indonesian: Second Language
ITB	Italian: Background Language [#]
ISL	Italian: Second Language
JBL	Japanese: Background Language [#]
JSL	Japanese: Second Language
KOB	Korean: Background Language [#]
KOR	Korean: Second Language
LIT	Literature
MPA	Media Production and Analysis
GRE	Modern Greek [#]
HIM	Modern History
MUS	Music
PAE	Philosophy and Ethics
PER	Persian [#]
POL	Polish [#]
PAL	Politics and Law
PBL	Punjabi: Background Language [#]
PSL	Punjabi: Second Language
REL	Religion and Life
RUS	Russian [#]
SIN	Sinhala [#]
SPA	Spanish [#]
TBL	Tamil: Background Language [#]
TML	Tamil: Second Language
TUR	Turkish [#]
VAR	Visual Arts

[#] To count as a List A course these languages must be studied at a registered school/provider or at a community organisation through a registered school or provider. Where a student is enrolled in the examination for one of these languages as a non-school candidate the course does not count for the WACE unit completion or breadth of study requirements.

You can demonstrate the minimum standard:

- through completing the Authority's OLNA, or
- if you demonstrated the required level or above in your Year 9 NAPLAN tests – Reading, Writing and Numeracy.

Students who have **not** prequalified in reading, writing or numeracy are required to sit the corresponding component/s of the OLNA twice before the end of Year 10, unless they demonstrate the required standard. If students do not demonstrate the standard by the end of Year 10, they must sit the component/s in Semester 1 of Year 11. Subsequently, students may choose when next to sit the component/s. Students will have up to six opportunities before completing Year 12 to demonstrate the WACE minimum standards of literacy and numeracy.

There are three assessment components:

- one 50-minute, 45-item multiple-choice in Reading
- one 50-minute, 45-item multiple-choice in Numeracy
- one 60-minute, extended response of up to 600 words in Writing.

International and mature-age students are required to sit the test at the first available opportunity. If you have a language background other than English and arrived from overseas in the past year, you may be able to defer sitting the OLNA. You should discuss your options with your careers counsellor or year coordinator.

Students who are registered as eligible to be enrolled in a Year 12 English as an Additional Language or Dialect (EAL/D) course will be granted an extra ten minutes to complete the reading, writing and numeracy components of the OLNA. Students must complete and submit an eligibility declaration for EAL/D by the published deadlines in order to be endorsed by their principal in time for the OLNA tests. Students are not required to subsequently enrol in a Year 12 EAL/D course; however, they must have been found eligible in order to be granted the extra time.

Information regarding the EAL/D eligibility process is available via the Authority website (<https://senior-secondary.scsa.wa.edu.au/syllabus-and-support-materials/english/english-as-an-additional-language-or-dialect>).

Students enrolled in the Physical Education Studies ATAR course must participate in the school-based practical external assessment (SPEA). The SPEA has replaced the practical (performance) examination for the Physical Education Studies ATAR course. Students enrolled in the course must complete the SPEA to satisfy the completion requirement for the course.

If a student is absent for the SPEA, they must submit an application for an approved absence due to sickness or misadventure and complete the practical assessment at a later date as coordinated by the school and marks submitted to the Authority.

Disability adjustments are available for students with conditions which may significantly affect their capacity to participate in the OLNA. These students, after discussions with parents/guardians/carers and the school, may choose not to sit the OLNA. Students with special needs who choose not to sit the assessment or have not demonstrated the standard through their performance in Year 9 NAPLAN will not qualify for the WACE. Students should discuss their options with their careers counsellor or year coordinator.

Support documents to assist teachers in preparing their students for the OLNA and for supporting those who have not demonstrated achievement at the minimum standard are available on the Authority website.

Full details regarding the OLNA can be found on the Authority website (<https://senior-secondary.scsa.wa.edu.au/assessment/olna>).

Accumulating results

You may accumulate results in WACE course units and VET after you leave school.

For students accumulating results for the WACE over multiple years, the WACE requirements that apply to you are those in place in the final year of your study.

Note: the WACE requirements may change over time and you are required to meet the WACE requirements current at the time of the completion of your studies.

Examinations

Students who are enrolled in a Year 12 ATAR course (Units 3 and 4) must sit the ATAR course examination. For ATAR courses with practical components, students must sit both the written and practical examinations.

Each student who has completed a pair of units in a Year 12 course and sat the ATAR course examination/s for that course receives an ATAR course report that summarises the student's achievement at school and in the ATAR course examinations. It also shows a student's performance in relation to the performance of other students in the course. ■

Table 2: Courses and programs

Course/program	Description
Australian Tertiary Admission Rank (ATAR) courses	These courses are examined by the Authority. Student results in ATAR courses are used by the Tertiary Institutions Service Centre (TISC) to calculate a student's Australian Tertiary Admission Rank (ATAR). The ATAR is used to determine eligibility for university entrance. Students seeking to achieve an ATAR will need to complete a minimum of four Year 12 ATAR courses, excluding unacceptable combinations (see Undergraduate Admission Requirements for School Leavers on the TISC website at www.tisc.edu.au). ATAR courses are typically for students who are aiming to go to university directly from school.
General courses	These courses are not externally examined. However, they each have an externally set task (EST) which is set by the Authority. General courses are for students who are typically aiming to enter vocationally based training or the workforce straight from school. General courses may be used for alternative entry to some university courses. Information about alternative entry should be sought directly from universities.
Vocational education and training (VET) industry specific courses	These courses include a full VET qualification and mandatory workplace learning. VET industry specific courses contribute towards the WACE as course units. Qualifications undertaken through VET industry specific courses can be used to meet the Certificate II or higher requirement of the WACE, if this option is chosen. The workplace learning component of the course contributes as unit equivalents towards the WACE. VET industry specific courses are for students aiming to enter further vocationally based training or the workforce straight from school.
Foundation courses	Foundation courses provide a focus on functional literacy and numeracy skills within the context of the subject, practical work-related experience and the opportunity to build personal skills that are important for life and work. They are designed for students who have not been able to demonstrate the minimum standard for the WACE standard of numeracy and Standard Australian English (SAE) literacy skills before Year 11 and are unlikely to do so before the end of Year 12 without significant levels of support. These literacy and numeracy standards are based on Level 3 of the Australian Core Skills Framework (ACSF) which outlines the skills required for individuals to meet the demands of everyday life and work in a knowledge-based economy.
Preliminary courses	<p>Preliminary courses are for students who have been identified as having a learning difficulty and/or an intellectual disability. They provide a relevant option for students when it is understood that:</p> <ul style="list-style-type: none"> the student cannot access the ATAR, General or Foundation course content with adjustment and/or disability provisions the Preliminary units do not contribute to achievement of a WACE. <p>Preliminary courses are for students who have been identified as having a recognised disability under the <i>Disability Discrimination Act 1992</i> and meet the above criteria.</p>
Vocational education and training (VET) credit transfer	VET qualifications undertaken separate to a VET industry specific course may contribute to the WACE through credit transfer. Qualifications and recognised accredited courses undertaken as VET credit transfer contribute to the WACE as unit equivalents and can be used to meet the Certificate II or higher requirement of the WACE, if this option is chosen.
Endorsed programs	These programs provide access to areas of learning not covered by WACE courses or VET programs and contribute to the WACE as unit equivalents. Endorsed programs are for students wishing to participate in programs which are delivered in a variety of settings by schools, workplaces, universities and community organisations.

Make the most of Year 12

Here are some strategies you can put in place to help your journey through Year 12. It's best to start with these early, but it's never too late.

- Be positive and clear about your goals from the outset and know that you will need to review your goals from time to time.
- Get into good habits early.
- Develop an effective routine that works for you and remember that you will need to be flexible as well as committed to it.
- Collect relevant information about university, training and career options post-school.
- Play to your strengths, build on your talents and skills.
- Be passionate about what you are doing and work hard.
- Take part in activities that will reduce stress and add balance to your life.
- Strike a balance between your commitments and priorities, including study, family, friends, extra-curricular activities and part-time work.
- Stay connected with your family and friends.
- Seek help from those who can provide it – teachers, counsellors, principal, deputy principal, parents, family and friends.

Stay healthy in Year 12

As you move through Year 12, it is important to be kind to yourself. Here are some ideas to help you stay healthy this year.

- Eat a balanced and nutritious diet with lots of vegetables and protein, some carbohydrates and fruit.
- Keep your energy levels in check by starting the day with a healthy breakfast and having regular meal times.
- Stay hydrated by drinking around two litres of water a day. Avoid caffeinated, sugary and energy drinks.
- Exercise to energise your body and mind. Use regular sporting activities as a way to stay in touch with people. Remember that something as simple as a walk can be calming. Clear your mind, relax, refocus.
- Spend time outside for the benefits of fresh air and sunshine, especially Vitamin D and oxygen.
- Take a break from screens. Give your eyes a rest and step away from the noise of social media.
- Get the rest you need. Establish a sleep routine and avoid the temptation of late nights – especially to finish work at the last minute.
- Stay calm and remember that there are strategies that might help if you find yourself feeling too stressed. One is to focus on slowing your breathing and taking a moment to be quiet and mindful. Another is to stretch and imagine yourself releasing any tension in your body as you do.

Additional support

Headspace has resources to help with a range of issues that can confront young people. You can check their services at www.headspace.org.au.

Other useful contacts

Beyond Blue www.beyondblue.org.au 1300 22 4636

Kids Helpline www.kidshelpline.com.au 1800 55 1800

WACE Checker

You can use the WACE Checker to check your progress towards meeting the requirements of the WACE. It is designed to determine whether you have met (or are expected to meet) each of the requirements for the WACE.

You will find the WACE Checker on the home page of the Authority website (<https://wacechecker.scsa.wa.edu.au>).

Information in

The WACE Checker makes its calculation on the basis of the information you enter. You will need to add information about your achievements in Year 11 and your expected achievements in Year 12, including:

- literacy and numeracy standard
- course enrolment
- VET achievement
- VET industry specific courses
- endorsed programs
- block credit.

When you add your anticipated grades for Year 12, you should add what you realistically expect to achieve this year.

Information out

The WACE Checker generates a report that shows the information you have entered and the requirements that you have met. If you are missing a requirement, the WACE Checker shows what it is. You can then choose to save and/or download and print the report.

You can save the data entered into the checker for a month. When you select **Save** you get an access code that will allow you to use the **Fetch My Data** button in the Checker.

You can also save the summary of your input as a PDF and use this to track your progress and to check the impact of any changes to your enrolments or achievements.

Support

The **Tell me more** button provides support when using the Checker.

If you have any concerns about your progress towards meeting the requirements of the WACE after entering your information, you should follow up with the support staff at your school. They will be able to help you clarify any issues around your enrolments and achievements.

Guidance

The WACE Checker is provided as a guide only. The report the Checker generates must not be interpreted as a guarantee that you will achieve a WACE. This is because achievement of the WACE is dependent on the calculation of a student's final results and completion of courses. ■



Equivalences

This section is relevant to students completing:

- VET qualifications or endorsed programs
- the equivalent of Year 11 studies interstate or overseas, or with a training provider.

Unit equivalence

If you complete a VET qualification independent of a VET industry specific course or an endorsed program, you may be able to use these to contribute unit equivalence towards the requirement of 20 units for a WACE.

VET unit equivalents

If you undertake a qualification separately from a VET industry specific WACE course, this is referred to as VET credit transfer.

If you successfully complete your VET qualification in this way, you are allocated WACE unit equivalence. A maximum of eight unit equivalents (four Year 11 units and four Year 12 units) can be counted towards meeting the WACE requirements, but there is no limit to the number of qualifications that can be reported on your WASSA.

Unit equivalence is calculated according to the AQF level of the completed qualification. There is provision for the recognition of a partially completed Certificate III or higher (see Table 3).

Unit equivalence is awarded consistently according to the certificate level of a qualification irrespective of delivery mode or class contact time allocated.

Endorsed programs unit equivalents

Endorsed programs can contribute up to four unit equivalents (two Year 11 and two Year 12) towards the WACE requirements. If you successfully complete an endorsed program, you are allocated WACE unit equivalence.

Unit equivalence for endorsed programs is pre-determined by an endorsed programs panel after consideration of the nature and scope of each program. The judgement for each endorsed program is made about the equivalence of the program in relation to one unit of a WACE course.

Check the Authority website (<https://senior-secondary.scsa.wa.edu.au/vet/endorsed-programs>) for information about how many unit equivalents an endorsed program has been allocated.

Unit equivalence and WACE achievement requirements

Endorsed programs and VET credit transfer are not graded. However, each unit equivalent contributes to the WACE achievement requirement for students to achieve 14 C grades or better with a minimum of six C grades in Year 12 units. Each unit equivalent achieved will directly reduce the number of C grades needed to meet the C grade achievement standard, up to a maximum of eight unit equivalents (four Year 11 units and four Year 12 units).

Your program could include up to eight unit equivalents in VET and/or endorsed programs and contribute to WACE requirements.

Recognition of VET not arranged or managed by school

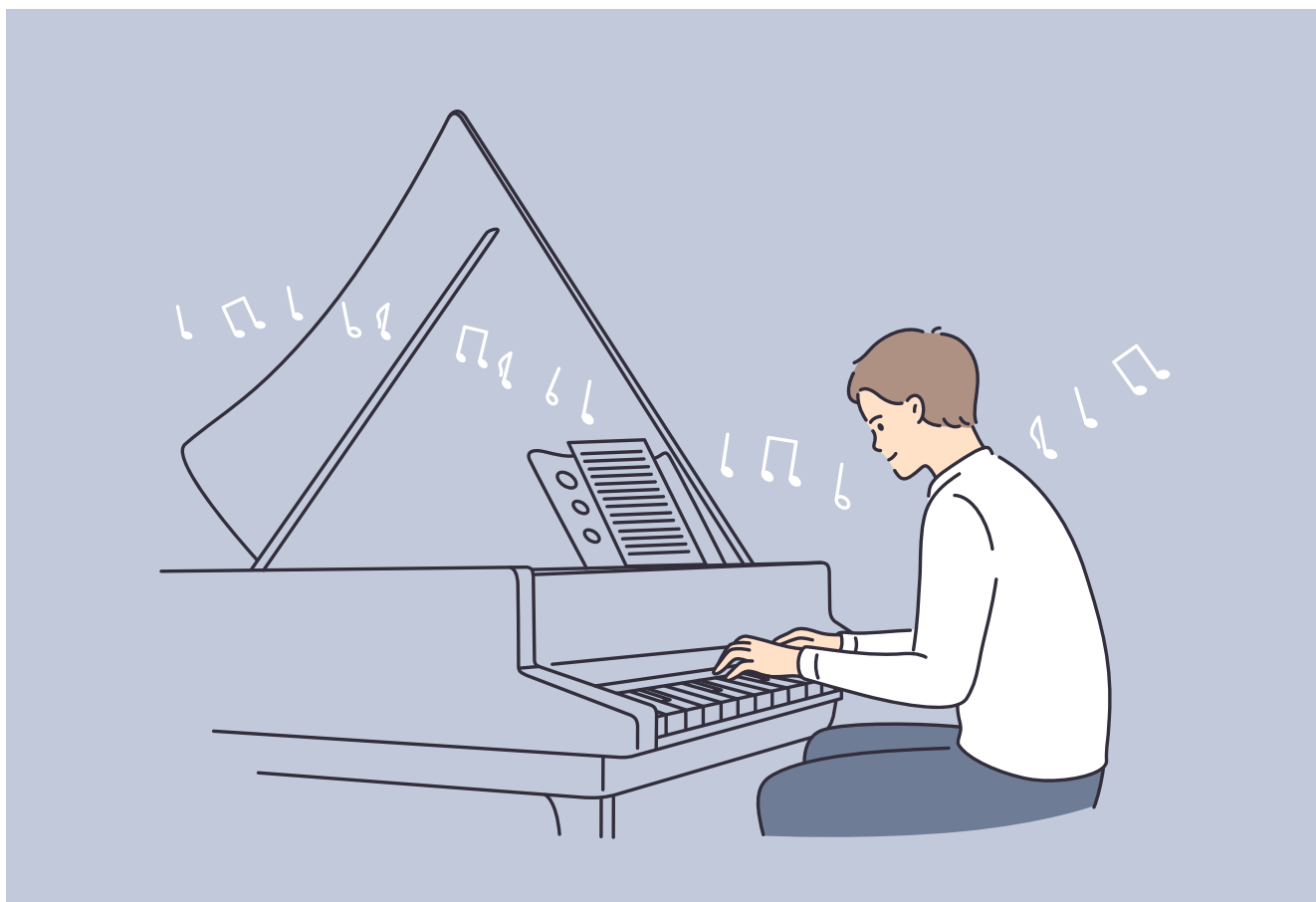
If you have completed a VET qualification outside of a school arranged or managed VET program, you can apply to the Authority to have this achievement recognised for the WACE. These qualifications will contribute to the WACE in the same way as VET credit transfer.

An application for WACE recognition of VET achievement completed outside of a school arrangement is available on the Authority website under Achievements (<https://www.scsa.wa.edu.au/forms/forms>).

Recognition of prior studies (Year 11 equivalence)

If you have completed the equivalent of Year 11 studies interstate or overseas, or with a training provider, you can apply for recognition of the equivalent of one year or one semester of senior secondary studies (Year 11).

Schools may enrol students in Year 12, if they consider that studies completed elsewhere indicate the students have the potential to achieve a WACE. If this is the case, your school will complete the online application through the Student Records Management System (SRMS) (<https://srms.scsa.wa.edu.au>).



If you are one of these students and successfully meet the requirements for the WACE, then recognition will be given for having achieved the equivalent of either one year or one semester of senior secondary studies (Year 11) either interstate, overseas, or through a training provider.

Generally, a Certificate II will provide credit for one semester of Year 11 studies. A Certificate III or higher will provide credit for one full year of Year 11 studies. No credit will be provided for partially completed qualifications.

VET that has been used for credit will not satisfy the completion of the VET Certificate II or higher requirement for the WACE.

Completion of the equivalent of one year

To be granted credit for a **full-year for Year 11** towards the achievement of the WACE, in Year 12 you must:

- complete
 - at least four Year 12 ATAR courses, or
 - at least five Year 12 General courses (or a combination of General and up to three

- Year 12 ATAR courses) or equivalent, or
- a Certificate II (or higher)* VET qualification in combination with ATAR, General and Foundation courses

- meet the assessment requirements in at least 10 Year 12 units (up to a maximum of four Year 12 units may be substituted by VET qualifications and endorsed programs). You may choose to substitute units with only VET qualifications (up to a total of four units); or with only endorsed programs (up to a total of two units); or with a combination of VET qualifications and endorsed programs (up to a total of four units, but with a maximum of two units with endorsed programs)
- achieve a minimum of six C grades (or equivalent) in Year 12 units
- demonstrate the literacy and numeracy standard
- complete a pair of Year 12 units from WACE English courses (English, Literature or English as an Additional Language or Dialect)
- complete a pair of Year 12 course units from both List A and List B.

* The partial completion of a Certificate III or higher may be awarded unit equivalence, if specific criteria are met (refer to sub-section 4.6.3 of the *WACE Manual 2026*).

Completion of the equivalent of one semester

To be granted credit for **one semester in Year 11** towards the achievement of the WACE, you must:

- complete:
 - at least four Year 12 ATAR courses, **or**
 - at least five Year 12 General courses (or a combination of General and up to three Year 12 ATAR courses) or equivalent, **or**
 - complete a Certificate II (or higher)* VET qualification in combination with ATAR, General and Foundation courses
- meet the assessment requirements in at least 15 units, including a minimum of 10 Year 12 units, (up to a maximum of two Year 11 and four Year 12 units may be substituted by VET qualifications and endorsed programs). You may choose to substitute units with only VET qualifications (up to a total of six units); or with only endorsed programs (up to a total of three units); or with a combination of VET qualifications and endorsed programs (up to a total of six units, but with a maximum of three units with endorsed programs)
- achieve a minimum of 12 C grades in units with at least six (or the equivalent) being achieved in Year 12 units
- demonstrate the literacy and numeracy standard
- complete three different units from WACE English courses (English, Literature or English as an Additional Language or Dialect), including a pair of Year 12 units
- complete a pair of Year 12 course units from both List A and List B in Year 12. ■

Table 3: VET credit transfer and unit equivalence

Completed qualification	Total equivalents	Year 11 credit allocation (Unit equivalents)	Year 12 credit allocation (Unit equivalents)
Certificate I*	2 units	2	0
Certificate II†	4 units	2	2
Certificate III or higher – Partial‡	4 units	2	2
Certificate III or higher – Full	6 units	2	4

* Equivalence is only awarded for completed Certificate I qualifications where the total achievement in units of competency is equal to, or greater than, 110 nominal hours (the equivalent of two course units).

† Equivalence is only awarded for completed Certificate II qualifications where the total achievement in units of competency is equal to, or greater than, 220 nominal hours (the equivalent of four course units).

Certificate II qualifications with units of competency that are less than 220 nominal hours in total will meet the minimum Certificate II qualification requirement; however, the qualification will only contribute towards the WACE as two Year 11 unit equivalents.

‡ The partial completion of a Certificate III or higher may be awarded unit equivalence if specific criteria are met (see sub-section 4.6.3 of the *WACE Manual 2026*).

An application for WACE recognition of VET achievement completed outside of a school arrangement may be downloaded from the Authority website (<https://www.scsa.wa.edu.au/forms/forms>).



Enrolments

Studying at more than one school

If you are studying WACE course units, Preliminary course units, VET or endorsed programs at more than one school, then each school involved will submit your enrolment details for the course units, VET or endorsed programs you have studied at that school.

Overseas full fee-paying students

If you are a full fee-paying Year 12 student from overseas studying in Western Australia, you are required to pay \$521 to the Authority (through your school) to enrol in one or more WACE course units. Generally, this fee must be paid at the time of enrolment with the Authority.

Full-time students

A full-time student is one who is enrolled in at least eight WACE course units or equivalent at a registered school.

Student Declaration and Permission

All Year 12 students are asked to give permission for the following:

- (a) release of your names should you win an award – the Authority award winners are published in the media and on the Authority’s website, if permission has been given by the student. Note: if you do not give permission for your name to be

published, and you win an award like the Beazley Medal or a subject exhibition, your name will **not** appear in the list of award winners on our website.

- (b) use of school work for creating support materials – the Authority is seeking permission for the use of school work produced during 2026, e.g. assignments, projects, portfolios, tests, school-based examination responses.
- (c) use of examination responses (written and practical) – the Authority is seeking permission for the use of:
 - ATAR course written and practical examination responses (copyright owned by the student)
 - images and sound recordings of you in photographs, audio recordings and audiovisual recordings that are made during the ATAR course practical examinations (copyright owned by the State of Western Australia).

Resource development

The use of school work material (b) and examination responses (c) as specified above may be used in resources developed by the Authority in carrying out its functions relating to the development and accreditation of courses and the standards, assessment and certification of student achievement.

Student Declaration and Permission

The name and school of an award winner is published on the Authority website. If you do not give permission for your name to be published, and you win an award, only the name of your school is published with your name indicated as ‘Not for publication’; your name will not appear on our website. It is not possible to alter the published list – whether to add or remove your details.

The material will be used under the following terms:

- Anything which identifies you or your school will be removed from the material before use by the Authority.
- The Authority may make the resources containing the material available in whole or in part, in print and electronic formats, and on the Authority website. The resources containing the material may be copied, or made available on an intranet, for non-commercial purposes in schools offering the WACE.
- This permission continues indefinitely until you revoke it by notifying the Authority in writing that you no longer want the material to be used by the Authority. The Authority will not provide payment for the use of the material.

To complete the Student Declaration and Permission online, go to the student portal (<https://studentportal.scsa.wa.edu.au>) and follow the login instructions. This Student Declaration and Permission needs to be completed online by **Thursday, 27 August 2026**.

Confirming enrolments

Students who are registered with the Authority are able to check their enrolment details in WACE course units online in the student portal (<https://studentportal.scsa.wa.edu.au>).

If your school has uploaded enrolments in VET units of competency and endorsed programs, these enrolment details will also be available to you. If you identify any errors, speak to your school. Your school will need to update your details with the Authority.

Note: it is important your details are correct in the system. Take care to check all your information and follow up with your school as soon as you can, if any corrections are needed.

Schools are able to download confirmation of student enrolments in WACE course units from the Authority's database. Details relating to enrolments in VET units of competency and endorsed programs also will be listed, if they have been uploaded to the Authority.

If you are enrolled as a non-school candidate for all your courses, a *Verification of student details* form will be sent to your personal email address. If you have not received a confirmation of your enrolment by **Monday, 27 April 2026**, you should contact a Data Support Officer at the Authority on either 9273 6345 or 9273 6352.

Changing enrolments

Changes to enrolments are made through your school.

The deadline for changes to Year 12 enrolments is **Thursday, 2 April 2026**. (You may only **withdraw** from a course after this date.)

The deadline for students to withdraw from Year 12 ATAR courses with a practical examination or a SPEA is up until **Thursday, 23 July 2026**.

The deadline for students to withdraw from Year 12 ATAR courses that do not have a practical examination component is **Monday, 10 August 2026**.

The deadline for changes to withdrawal of enrolment from General, Foundation, Preliminary and VET industry specific courses for Year 12 students is **Monday, 10 August 2026**.

No changes will be accepted after these dates. ■



School assessment

Grades and school marks

To be assigned a grade and a mark out of 100 for a pair of WACE course units, you must have had the opportunity to complete your school's education and assessment programs for the units.

Teachers of Year 12 students submit results to the Authority at the end of the school year based on the assessments you complete. These assessments and the weighting for each are shown in the assessment outline developed for each course by the school and provided to all students at the commencement of the course.

You will receive a grade (A, B, C, D or E) for each pair of units that you complete, except for Preliminary (P) units, which are not graded. Student achievement for P units is recorded as 'completed' or 'not completed'. Course completion is determined by the school according to criteria set by the Authority. A 'U' notation cannot be submitted for a Year 12 ATAR, General or Foundation course (see sub-section 2.4.3 of the *WACE Manual 2026*).

You will also receive a school mark in the range 0 to 100 for each unit pair of an ATAR, General or Foundation course you complete in Year 12. For the school mark for an ATAR course with a practical examination (performance, oral, portfolio or production), you receive a practical mark out of 100, as well as a written mark out of 100. Marks are not reported for Preliminary courses.

Note: in Year 11 you may have received a grade and mark for each individual unit you completed.

You will receive a 'completed' status instead of a grade for VET industry specific course unit pairs. The notation 'completed' counts the same as a C grade. If you do not complete the requirements of a VET industry specific course, you will be awarded a 'U' notation (see above), but WACE credit may contribute as VET unit equivalence, depending on how much of the course you have finished.

Endorsed programs are not comprised of units, but a successfully completed endorsed program is allocated one, two, three or four unit equivalents. An endorsed program is allocated unit equivalence on the basis of 'average' learning time.

Adjustment of grades and school marks

During the school year, the Authority uses several procedures to ensure that the grades awarded by different schools are comparable. Teachers meet in groups and/or are visited by Authority officers to discuss assessment procedures and course standards. The Authority provides sample assessment tasks and samples of student work to indicate to teachers the required level of difficulty and standard of marking for each course.

Grades assigned by your school are based on the Authority's grade descriptions for each course. The grades you receive from your school are provisional until confirmed by the Authority. Your school is required to advise you in writing if any changes are made to your provisional grades during the approval process. The Authority only adjusts grades assigned by a school in exceptional circumstances.

ESTs for General and Foundation courses

All students enrolled in a Year 12 General or Foundation course are required to complete the EST developed by the Authority for that course.

The EST is administered in Term 2 in a period prescribed by the Authority. The design brief for the EST is provided in the Year 12 General or Foundation syllabus. The EST is marked by the teacher/s delivering the course using the marking key provided by the Authority. The school provides the marks for all students to the Authority.

As the EST is included in the assessment table, the mark for this task contributes to the final mark for the pair of units. The mark for the EST has a weighting of 15 per cent of the final mark for a pair of units.

Each year the Authority reviews a sample of EST scripts from each school delivering the course. The school submits the scripts of students nominated by the Authority for independent marking.

If the data indicates the need for the school to consider adjusting its marking standards, the revised standards should be applied by the teachers when marking all future assessment tasks.

ATAR courses

Information about the achievement of a Year 12 student who completes a pair of units in an ATAR course comes from two sources:

- the student's mark submitted by the school to

- the Authority (school course mark out of 100)
- the student's mark from the ATAR course examination/s set by the Authority.

These marks are used to calculate the student's combined score.

TISC calculates scaled scores in all ATAR courses for use in determining a student's ATAR (see sub-section 3.5.2 of the *WACE Manual 2026*).

For all ATAR courses with a practical examination (oral, performance, portfolio or production), for the pair of units, schools are required to submit to the Authority:

- a course mark out of 100 (weighted for each component, see Table 4)
- a mark out of 100 for the written component
- a mark out of 100 for the practical component.

It is unlikely that school marks for the same course at different schools are comparable. However, the ATAR course examination marks of students at all schools for the same course are on the same scale and are therefore comparable.

Statistical moderation of school marks in a course places the moderated school marks on the same scale as the ATAR course examination marks at the school

for that course. Thus, statistically moderated school marks are comparable in all schools.

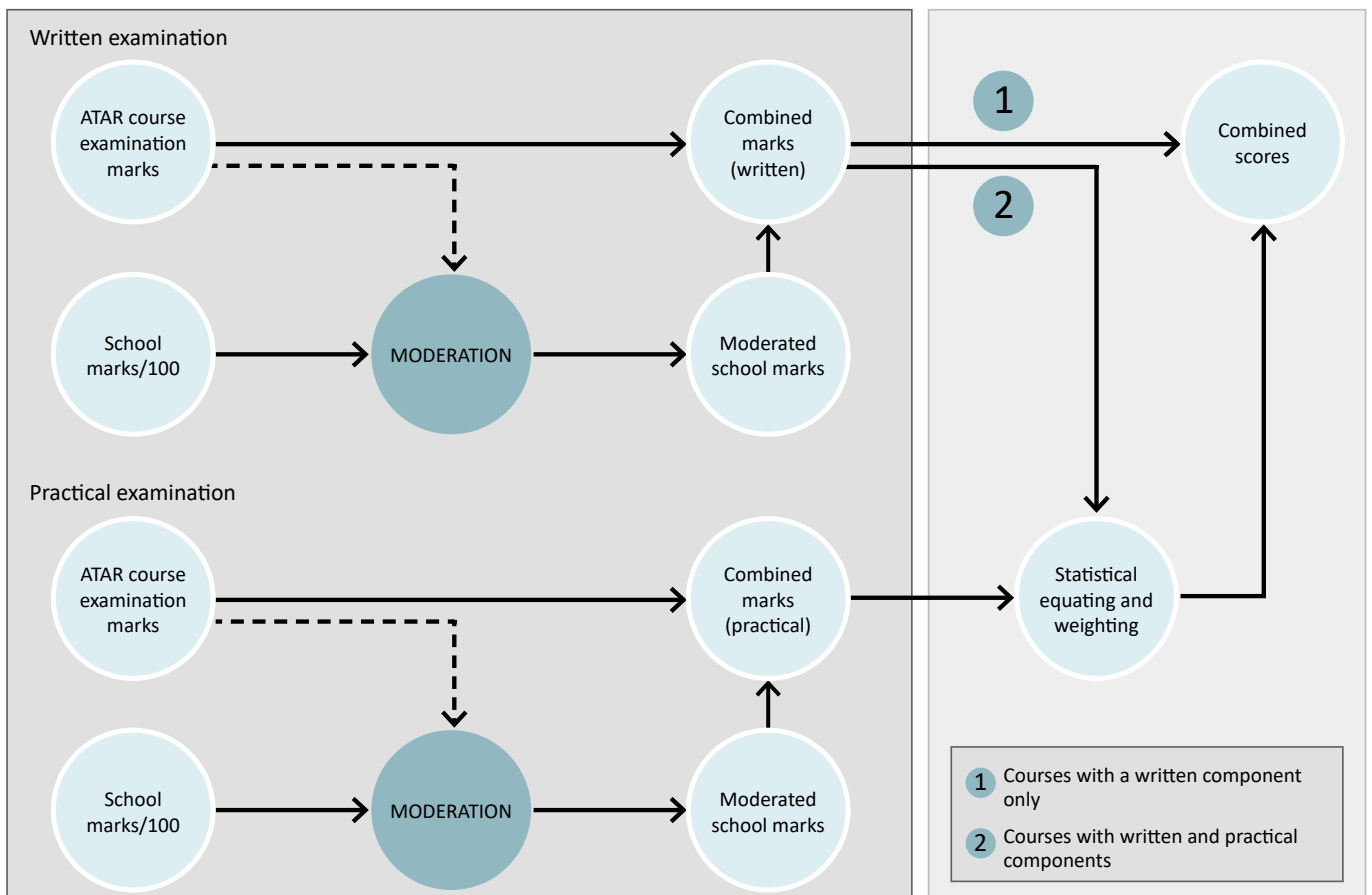
For Year 12 ATAR courses with both a written and a practical component, statistical moderation is applied separately to the written school marks and to the practical school marks. ATAR course written examination marks are used for the moderation of the written school marks and ATAR course practical examination marks are used for the moderation of the practical school marks.

A combined mark is calculated for both the written and practical components. A student's combined mark for the written component is the average of the ATAR course written examination mark and the moderated school mark for the written component.

For a course with a practical examination, a student's combined mark for the practical component is the average of the ATAR course practical examination mark and the moderated school mark for the practical component.

A statistical equating process is used to ensure the combined marks for the written and for the practical components of a course are on the same scale. The combined scores are then calculated as the sum of

Figure 1: The Authority's post-examination process



the weighted statistically equated written and practical combined marks. The weightings for each component are provided in Table 4.

The 'course unit mark' for Interstate Language courses is to be calculated as a combination of the course unit practical school mark and the course unit written school mark, using the weightings given in the syllabus.

For courses with written examinations only, the combined score is the same as the combined mark for the written component.

Table 4: Combined mark weightings for Year 12 ATAR courses with a practical examination

Course	Written combined mark weighting	Practical combined mark weighting
Aviation	80%	20%
Chinese: Background Language	75%	25%
Chinese: Second Language	70%	30%
Dance	50%	50%
Design	50%	50%
Drama	50%	50%
French: Background Language	70%	30%
French: Second Language	70%	30%
German: Background Language	70%	30%
German: Second Language	70%	30%
Hindi: Background Language	65%	35%
Hindi: Second Language	65%	35%
Indonesian: Background Language	65%	35%
Indonesian: Second Language	60%	40%
Italian: Background Language	70%	30%
Italian: Second Language	70%	30%
Japanese: Background Language	75%	25%
Japanese: Second Language	70%	30%
Korean: Background Language	65%	35%
Korean: Second Language	65%	35%
Materials Design and Technology	50%	50%
Media Production and Analysis	50%	50%
Music	50%	50%
Punjabi: Background Language	65%	35%
Punjabi: Second Language	65%	35%
Tamil: Background Language	65%	35%
Tamil: Second Language	65%	35%
Visual Arts	50%	50%

For the Physical Education Studies ATAR course, the mark from the external assessor of the SPEA provides the external practical mark used in the calculation of a student's combined score for the practical component of the course.

Review of school assessments

Your school must inform you in writing of your course grade and school mark for all courses studied in Year 12 by **Friday, 23 October 2026**.

If you believe that your grade and/or school mark is incorrect, you should make a request in writing to your school for a review of the result.

An assessment review can determine if:

- the assessment outline implemented conforms/ conformed with the syllabus requirements
- the assessment policy implemented conforms/ conformed with the Authority guidelines
- the school's assessment procedures conform/ conformed with its assessment policy
- there were any procedural errors in allocation of the school grade or computational errors in the determination of the school mark.

A teacher's judgement about a student's achievement (i.e. the mark) on an individual assessment task is not subject to review and as a result the school is not required to re-mark your work.

If, after an assessment review has been completed by the school, you still believe that your grade and/or school mark is incorrect, then you can lodge an appeal with the Authority on a form available from the Authority website (<https://www.scsa.wa.edu.au/forms/forms>).

This form must be received by the Authority by **Friday, 30 October 2026**. A fee of \$28 is payable per course unit.

If the student appeal is upheld, the Authority's Assistant Executive Director – Examinations, Certification and Testing advises the school of the actions required in accordance with the committee's decision.

Authenticity of your work

All work you submit for school assessment must be your own work. Any material that is included in your work that is not your own must be acknowledged appropriately.

Any activity that enables a student to gain an unfair advantage over other students in a school assessment task will be penalised in accordance with the school's assessment policy. Unacceptable activities include, but are not limited to:

- copying someone's work in part or in whole and presenting it as your own
- buying, stealing or borrowing another person's work and presenting it as your own
- paying someone to write or prepare work
- submitting work to which another person, such as a parent, tutor or subject expert has contributed substantially
- using material directly from sources, such as books, journals or the internet, including artificial intelligence application (AIA) generated responses, without appropriately acknowledging the source
- building on the ideas of another person without reference to the source
- using the words, ideas, designs or workmanship of others in practical tasks (oral, performance, production, portfolio submission) without appropriate acknowledgement
- using non-approved materials and/or equipment during an assessment task or examination
- assisting another student to engage in an activity that will enable them to have an unfair advantage over other students
- using generative artificial intelligence tools which are not acknowledged and/or referenced.

All the work you submit as part of a Year 12 ATAR course practical examination process also must be your own. Any material included in your work that is not your own, including work created using generative artificial intelligence tools, must be acknowledged appropriately. ■



Examinations

This section is relevant to students enrolled in Year 12 ATAR courses. The *Year 12 Handbook Part II: Examinations* provides more detail about examinations. It will be published in July 2026.

All Year 12 ATAR courses have written examinations.

Some courses have a written and a practical examination (performance, oral, portfolio or production). The Authority sets, administers and marks these examinations, with the exception of Interstate Language courses. The markers are all qualified people who are unaware of your name or which school you attend. The Year 12 courses with ATAR course examinations are listed in Appendix A.

ATAR course examinations provide students and the wider community with confidence about the standards achieved at the end of Year 12. They also make it possible to compare the achievement of students, regardless of the school attended, for the purposes of calculating your ATAR.

The Authority reports on your performance in ATAR course examinations at the end of the year.

Enrolling in examinations

When you enrol in a Year 12 ATAR course, you are automatically enrolled to sit the ATAR course examination/s in that course as a school candidate.

If you are applying for university admission, you should check that your course selections meet any entry requirements.

University admission information is available on the TISC website (www.tisc.edu.au).

Non-school candidates

Typically, students enrolled at a school cannot sit an ATAR course examination as a non-school candidate.

You may enrol to sit an ATAR course examination as a non-school candidate if you are:

- seeking entry to university as a mature-age applicant, **or**
- a student who has previously completed Year 12, **or**
- a Year 12 student undertaking language course examinations through Interstate Language offerings where the course is not offered by the school, **or**
- a Year 12 student undertaking Chinese: First Language or French, German, Hindi, Indonesian, Italian, Korean, Punjabi or Tamil: Background Language course examinations where the course is not offered by the school (excluding schools acting

as a mentor school for a community language school).

To enrol as a non-school candidate in an Interstate Language course examination or Chinese: First Language or French, German, Hindi, Indonesian, Italian, Korean, Punjabi or Tamil: Background Language course examinations, you must be enrolled to sit at least three other ATAR course examinations as a school candidate in that year. See Appendix A for a list of ATAR courses.

Non-school candidature

Non-school candidature in an ATAR course examination means that the candidate will **not** have a school assessment to contribute to his/her final scaled mark for the course. That is, the scaled mark for the course is calculated on the examination mark only. Non-school candidates do not receive an ATAR course report.

As a non-school candidate, that examination does **not** contribute towards meeting the requirements for the WACE.

A student enrolled in an ATAR course examination as a non-school candidate will not be considered for a sickness/misadventure claim. Nor do the sickness/misadventure provisions apply to you for this examination. That is, non-school candidates who suffer a sickness or misadventure prior to or during the ATAR course examination caused by them, a third party or the Authority are unable to receive consideration for their examination mark.

You may not enrol in an external examination for an Interstate Language at the same time as being enrolled in that course with the State that hosts the language. You may not enrol in more than one Interstate Language examination.

Non-school candidates are responsible for downloading their *Personalised examination timetable* from the student portal (<https://studentportal.scsa.wa.edu.au>).

A fee is payable at the time of enrolling as a non-school candidate. Where there is a practical examination component, a non-school candidate located outside the Perth metropolitan area is responsible for travel costs. Enrolments as non-school

candidates close on **Thursday, 2 April 2026**. No late enrolments will be accepted.

Sitting examinations

To meet WACE requirements, Year 12 students who are enrolled in a Year 12 ATAR course are required to sit the ATAR course examination (written and, in some courses, practical) for that course. If you do not sit an ATAR course examination and do not have an approved *Sickness/Misadventure Application* for the course, the pair of units completed in that year will not contribute towards any of the WACE requirements.

Sitting ATAR course examinations outside Western Australia

If you are a Western Australian student wishing to sit ATAR course examinations outside Western Australia, you can do so, provided that you are:

- a permanent resident of Western Australia
- outside Western Australia for reasons beyond your control
- studying your courses through an approved Western Australian secondary education institution.

To offset some of the costs associated with setting up an examination centre and the secure despatch of examination papers, students sitting ATAR course examinations outside Western Australia are required to pay the fees outlined in the application form. The candidate is responsible for all expenses associated with sitting ATAR course examinations outside of Western Australia, including a supervisor, venue and immediate return of examination scripts by international courier.

This fee is non-refundable if examination arrangements are cancelled after **Friday, 3 July 2026**.

Applications are to be made as soon as possible and no later than **Friday, 22 May 2026**.

Application forms are available from the Authority website (<https://www.scsa.wa.edu.au/forms/forms>).

Examination conduct

Unacceptable behaviour

Any activity that allows one candidate to have an unfair advantage over other candidates is deemed to be unacceptable.

All work submitted for assessment (including practical examinations) must be your own work. If it incorporates material that is not your own work, this material must be acknowledged appropriately.

Plagiarism could lead to an examination mark being cancelled or being significantly reduced.

Take careful note of information about attribution and appropriation in the practical examination requirements documents available on the Authority website.

You must obey instructions regarding dress, conduct, smoking etc. that apply in the school or centre to which you have been allocated for the examination. School authorities have the right to ask you to leave the premises if you do not abide by these rules.

Information about the Breach of Examination Rules is available on the Authority website (<https://senior-secondary.scsa.wa.edu.au/assessment/examinations/rules-of-conduct-for-atar-course-examinations>). It will also be provided in Part II of this handbook.

Equitable access adjustments

Adjustments may be made if you have permanent or temporary disabilities that may disadvantage you in an examination situation.

Adjustments are available for practical or written examinations. They may include, for example, the consumption of food, the use of a scribe, extra working time, rest breaks, specified seating, coloured or enlarged papers, or alternative format practical examinations. Your school must submit an application



Did you know that for your ATAR course exams you need to apply for special provisions for items such as sensory aids, including fidget and tactile devices, foam ear plugs and chewing gum?

on your behalf if you are seeking any variation to the standard examination conditions. The application must be supported by documentation as described on the application form. Adjustments requested for the written examinations do not apply to the practical examinations. Adjustments to standard arrangements for practical examinations must be requested separately to those needed for written examinations, using the appropriate sections of the Equitable Access Adjustments application form. The application form and further information about permissible adjustments, such as the Authority's *Equitable Access to Assessment Policy and Guidelines*, are available from the Authority website (<https://senior-secondary.scsa.wa.edu.au/assessment/examinations/special-provisions>).

If you are suffering from a long-term injury or illness (i.e. injuries or illnesses existing at the start of Term 3, 2026) that will affect your participation in a standard practical performance examination of Dance or Music, you must have your school apply for you to be examined in an alternative format.

Sickness/misadventure provisions (see next sub-section) do not apply in cases where the illness or injury is long term.

Applications for equitable access adjustments for candidates with a disability sitting ATAR course practical and written examinations are due by **Thursday, 26 March 2026**.

Applications received after this date will be considered only if exceptional circumstances have prevented the submission of the application by the due date. Applications for alternative format ATAR course practical examinations will be accepted until 4.00 pm on **Wednesday, 29 July 2026**.

In the case of illness or disability occurring at the time of the ATAR course examinations, candidates should contact the Principal Consultant – Special Provisions at the Authority on (08) 9273 6316 to determine if arrangements can be made.

Candidates with adjustments will be able to download a copy of their arrangements from the student portal (<https://studentportal.scsa.wa.edu.au>).

Key dates Examinations 2026

March

- **26** – Applications for equitable access adjustments for candidates with a disability sitting ATAR course examinations due

April

- **02** – Enrolments as a non-school candidate for an examination close

June

- **10** – Examination timetable published on the Authority website
- **18** – Music ATAR course practical examination information collection forms due

July

- **03** – No changes after this date for Music practical examination instruments
 - Last day for late applications to sit ATAR course examinations outside WA
- **22** – Part II of this handbook released
- **23** – Last day to withdraw from ATAR courses with practical examination components or a SPEA
- **29** – Completed applications for alternative format ATAR course practical examinations accepted until 4.00 pm

August

- **10** – Last day for changes to withdrawal of enrolment from General, Foundation, Preliminary and VET industry specific courses for Year 12 students
 - Last day to withdraw from Year 12 ATAR courses that do not have a practical examination component or a SPEA

September

- **08** – *Personalised examination timetables* for the practical and written examinations available to download in the student portal
- **26** – ATAR course practical (performance) examinations start

October

- **25** – ATAR course practical (performance) examinations finish
- **28** – ATAR course written examinations start
- **29** – Completed Sickness/Misadventure applications for ATAR course practical examinations due

November

- **19** – ATAR course written examinations finish
- **24** – Completed Sickness/Misadventure applications for ATAR course written examinations due

Provisions for sickness or misadventure

Consideration may be given to candidates (with the exception of non-school candidates) suffering from a temporary sickness or misadventure close to or during the examinations, if they believe it may have affected their performance in the examination. Long-term illness/injury and language difficulty will not be considered under these provisions.

More details will be provided in Part II of this handbook and are available at <https://senior-secondary.scsa.wa.edu.au/assessment/examinations/special-provisions>. Examination marks cannot be changed for non-school candidates who suffer a sickness or misadventure before or during the examination, whether caused by the candidate, a third party or the Authority.

Students who suffer an illness or disability during the school year should discuss the matter with the appropriate person/s at their school. It is a school decision as to what arrangements will be made with respect to school assessments in this situation.

Practical examinations

Practical examinations submissions

The 2026 ATAR course practical portfolio and production submissions are due to be submitted on **Tuesday, 22 September 2026**.

Practical examination timetables

The 2026 ATAR course practical performance and oral examinations are scheduled as follows:

- Aviation, Dance, Drama and Music, and commence for Chinese: Second Language, French: Background Language, French: Second Language, German: Background Language, German: Second Language, Hindi: Background Language, Hindi: Second Language, Indonesian: Background Language, Indonesian: Second Language, Italian: Background Language, Italian: Second Language, Japanese: Second Language, Korean: Background Language, Korean: Second Language, Punjabi: Background Language, Punjabi: Second Language, Tamil: Background Language and Tamil: Second Language – **Saturday, 26 September to Sunday, 4 October 2026** (Saturday, Sunday and the public holiday included)
- Continuation of ATAR course practical (oral) examinations – **Saturday, 10 October to Sunday, 25 October 2026** (Saturday and Sunday included).

No allowance can be made in the timetable for holidays, work or personal arrangements.

If you are enrolled in a practical examination, you will be provided with a *Personalised practical examination timetable*. This timetable will contain the date, venue, time and location of the examination. Download your *Personalised practical examination timetable* on **Tuesday, 8 September 2026** from the student portal (<https://studentportal.scsa.wa.edu.au>) or, alternatively, your school can download a copy of your timetable.

You must sign your *Personalised practical examination timetable/s* and take it to your practical examination/s.

The language practical (oral) examinations set by interstate assessment authorities are typically conducted from September through to the end of October. These courses are listed in Appendix A. Dates for Interstate Language practical examinations will be available in Term 3, 2026. Students sitting Interstate Language examinations need to check their *Personalised practical examination timetable* in the student portal for dates.

Students are able to withdraw from ATAR courses with a practical examination component up until **Thursday, 23 July 2026**. This includes students enrolled as non-school candidates in an Interstate Language examination.

Examination materials and structure

For detailed information regarding each of the ATAR course practical examinations you are strongly advised to download the 2026 practical examination requirements document from the relevant course page at <https://senior-secondary.scsa.wa.edu.au/syllabus-and-support-materials> when they are made available in late Term 1, 2026.

This document typically includes information such as:

- the structure and organisation of the practical examination
- forms to be completed
- clothing to be worn
- material or equipment permitted
- Breach of Examination Rules.

Music

In Term 2, 2026, schools will receive a form which is used to collect information about the type of examination in which you wish to be examined. Where relevant, you will need to provide information about music context, the instrument you wish to play and details of your accompanist.

You and your teacher will sign the form and will return it to the Authority by **Thursday, 18 June 2026**.

There will be no changes made to your selections and arrangements after 4.00 pm on **Friday, 3 July 2026**.

Physical Education Studies

The Physical Education Studies ATAR course no longer has a practical examination. Instead, students will complete a school-based practical external assessment (SPEA) as part of their coursework. Further information is available on the course page at <https://senior-secondary.scsa.wa.edu.au/syllabus-and-support-materials>.

Written examinations

Written examination timetables

The 2026 ATAR course written examinations are scheduled to start on **Wednesday, 28 October 2026** and finish on **Thursday, 19 November 2026**. The examination timetable will be published on the Authority website (www.scsa.wa.edu.au) on **Wednesday, 10 June 2026**.

On **Tuesday, 8 September 2026** you will be able to download from the student portal (<https://studentportal.scsa.wa.edu.au>) a copy of your *Personalised written examination timetable* showing the course, time, date and location for each written

examination in which you are enrolled, including Interstate Language examinations.

You must check this timetable to see that all of the examinations you are planning to sit are listed. If you believe there is an error on your *Personalised written examination timetable*, consult with your school administration to check enrolment details.

You must sign this timetable and take it to each written examination as proof of enrolment together with a form of ID, preferably photographic, for proof of identity.

The *Personalised written examination timetable* will show your WASN, which will need to be written on each of your examination Question/Answer booklets.

Most candidates will be able to sit their examinations at their current school. However, schools with course enrolments of fewer than 20 candidates may be combined with other schools into one large centre.

Written examinations with a listening component are held at centres specially set up for this purpose.

The last date for receipt by the Authority for withdrawal of enrolment from ATAR courses without a practical component for Year 12 students is **Monday, 10 August 2026**.

Examination

The front covers for each examination are published on the Authority website at <https://senior-secondary.scsa.wa.edu.au/assessment/examinations/examination-front-covers>. The front covers are important because they include:

- a list of the equipment you can take into the examination room
- information about the structure of the papers.

Being in possession of unauthorised materials – including personal items and non-approved equipment – and mobile technologies during the examination can lead to a breach of examination rules.

Personal items that you cannot take into the examination include:

- a watch
- lip gloss
- keys
- wallet
- tissues.

Non-approved equipment that you cannot take into the examination include:

- non-compliant rulers
- calculators (if not listed on the front cover).

If you take personal items to an examination, they must be left in bags outside the room or at the front of the examination room, as instructed by supervisors. The supervisors are not responsible for candidates' personal items.

Being in possession of mobile technologies during the examination can lead to a breach of examination rules. Mobile technologies that you cannot take into the examination include:

- smart watch
- smart glasses
- mobile phone
- unapproved calculators.

Tip: take only the authorised equipment and materials listed on the front cover of an examination.



Useful resources for examination preparation

You may find the following resources useful in your examination preparation. Some of these documents can be obtained from the Authority.

- The syllabuses for all Years 11 and 12 courses can be found on the relevant course page at <https://senior-secondary.scsa.wa.edu.au/syllabus-and-support-materials>. Copies of the syllabuses may also be available from schools.
- Student editions of the examination reports from the examining panel are published on the past examinations pages at <https://senior-secondary.scsa.wa.edu.au/further-resources> as the Summary examination report for candidates and provide advice and information for candidates.
- Front covers of this year's ATAR course examinations will be published **on Friday, 28 August 2026** on the Authority website at

<https://senior-secondary.scsa.wa.edu.au/assessment/examinations>. These covers provide information that includes:

- the time allowed for the paper
- materials required/recommended for the paper – provided by the supervisor and provided by the candidate
- an important note to candidates
- the structure of the examination paper – the number of sections, the number of questions within the sections, if there is any choice, the suggested working time for each section, the marks available and the percentage of the examination.

As a student, a comprehensive set of study notes that you have developed and refined yourself as you complete each section of the course should be your main source of information when revising for the examinations. ■

Certification

Folio of achievement

By the end of January 2027, you will be able to download digital copies of your folio of achievement. To download digital copies of documents and certificates, you will need to log in to the student portal (<https://studentportal.scsa.wa.edu.au>). All students who have satisfactorily completed any WACE course unit, Preliminary unit, VET unit of competency or endorsed program will have a folio of achievement.

The Authority no longer provides paper copies of the documents and certificates contained in the folio of achievement.

This folio of achievement will include one or more of the following:

- WASSA
- WACE
- ATAR course report
- selected award certificates.

WASSA

The WASSA formally records, as relevant:

- achievement of WACE requirements

- achievement of literacy (reading and writing) standard
- achievement of numeracy standard
- achievement of exhibitions and awards
- school grades, school marks and combined scores in ATAR units*
- school grades and school marks in General and Foundation units*
- completed Preliminary units
- completed VET industry specific units
- completed VET qualifications and VET units of competency
- completed Accredited Courses from the Accredited Course Recognition Status List
- completed Department of Training and Workforce Development (DTWD) funded VET skill sets
- completed endorsed programs
- number of community service hours undertaken (if reported by the school).

WACE

The WACE indicates that you have met the specified requirements.

* In Year 12, Units 3 and 4 are reported as a year-long course. In Year 11, Units 1 and 2 are typically reported as a year-long course but may be reported separately.



Remember, you will use separate accounts to log into the Authority's student portal and the TISC portal. If you have questions about your ATAR or scaling, you will need to contact TISC.

ATAR course report

A Year 12 ATAR course report, records the:

- school mark[†]
- moderated school mark[†]
- examination mark[†]
- combined score
- standardised combined score
- state-wide distribution of combined scores in that course
- number of candidates who have completed the course.

The State means for examination marks and combined scores for the ATAR course examination will also be listed.

The ATAR course report shows how you performed relative to all other students (excluding non-school candidates) who have completed the course (represented by a location on a graph).

Year 12 results

Year 12 students and Year 11 students who sat for the ATAR course examinations will be able to access their results via the student portal (<https://studentportal.scsa.wa.edu.au>) in **December 2026** (date to be confirmed).

[†] A course that has a practical examination component will have the written and practical marks reported separately.

Information relating to exhibitions and awards will be listed on the WASSA.

Australian Tertiary Admission Rank

Your ATAR is calculated by TISC on the basis of student achievement data provided to them by the Authority.

The ATAR is not included on either the WASSA or the ATAR course report. It is not calculated by the Authority. You will be able to obtain your ATAR from TISC (www.tisc.edu.au) in **December 2026**.

To access your ATAR, you will need your WASN and a password. Initially, the password is pre-set, with instructions on the TISC login screen. For advice regarding university admission, phone TISC on (08) 9318 8000 or email info@tisc.edu.au.

Exhibitions and awards

Exhibitions and awards are granted by the Authority to senior secondary students studying WACE courses and VET. The awards recognise individual excellence in both ATAR courses and VET.

The list of exhibitions and awards and their selection criteria can be found on the Authority website (<https://senior-secondary.scsa.wa.edu.au/certification/exhibitions-and-awards>). ■

Appendix A: Year 12 ATAR courses that have an external examination 2026

Subject title	Subject code	ATAR examinable course
Aboriginal and Intercultural Studies	AIS	ATAIS
Accounting and Finance	ACF	ATACF
Agribusiness	AGB	ATAGB
Agricultural Science and Technology	AST	ATAST
Ancient History	HIA	ATHIA
Applied Information Technology	AIT	ATAIT
Aviation*	AVN	ATAVN*
Biology	BLY	ATBLY
Business Management and Enterprise	BME	ATBME
Chemistry	CHE	ATCHE
Chinese: First Language	CFL	ATCFL
Chinese: Second Language*	CSL	ATCSL*
Computer Science	CSC	ATCSC
Dance*	DAN	ATDAN*
Design*	DES	ATDES*
Drama*	DRA	ATDRA*
Earth and Environmental Science	EES	ATEES
Economics	ECO	ATECO
Engineering Studies	EST	ATEST
English	ENG	ATENG
English as an Additional Language or Dialect†	ELD	ATELD†
Food Science and Technology	FST	ATFST
French: Background Language*	FBL	ATFBL*
French: Second Language*	FSL	ATFSL*
Geography	GEO	ATGEO
German: Background Language*	GBL	ATGBL*
German: Second Language*	GSL	ATGSL*
Health Studies	HEA	ATHEA
Hindi: Background Language*	HBL	ATHBL*
Hindi: Second Language*	HDI	ATHDI*
Human Biology	HBY	ATHBY
Indonesian: Background Language*	INB	ATINB*
Indonesian: Second Language*	IND	ATIND*

Subject title	Subject code	ATAR examinable course
Italian: Background Language*	ITB	ATITB*
Italian: Second Language*	ISL	ATISL*
Japanese: Second Language*	JSL	ATJSL*
Korean: Background Language*	KOB	ATKOB*
Korean: Second Language*	KOR	ATKOR*
Literature	LIT	ATLIT
Marine and Maritime Studies	MMS	ATMMS
Materials Design and Technology*	MDT	ATMDTM* ATMDTT* ATMDTW*
Mathematics Applications	MAA	ATMAA
Mathematics Methods	MAM	ATMAM
Mathematics Specialist	MAS	ATMAS
Media Production and Analysis*	MPA	ATMPA*
Modern History	HIM	ATHIM
Music*	MUS	ATMUS*
Outdoor Education	OED	ATOED
Philosophy and Ethics	PAE	ATPAE
Physical Education Studies [#]	PES	ATPES [#]
Physics	PHY	ATPHY
Politics and Law	PAL	ATPAL
Psychology	PSY	ATPSY
Punjabi: Background Language*	PBL	ATPBL*
Punjabi: Second Language*	PSL	ATPSL*
Religion and Life	REL	ATREL
Tamil: Background Language*	TBL	ATTBL*
Tamil: Second Language*	TML	ATTML*
Visual Arts*	VAR	ATVAR*

* Courses with a practical examination. All ATAR courses have a written examination.

[#] Course with a school-based practical external assessment.

[†] Course with a common oral assessment task.

Appendix B: Interstate Language course examinations 2026

Interstate Language courses	State	Code
Armenian	NSW	ARM
Chinese: Background Language (Chinese in Context NSW)	NSW	CBL
Croatian	NSW	CRO
Filipino	NSW	FIL
Japanese: Background Language (Japanese in Context NSW)	NSW	JBL
Serbian	NSW	SER
Swedish	NSW	SWE
Hungarian	SA	HUN
Khmer	SA	KHM
Modern Greek	SA	GRE
Nepali	SA	NEP
Polish	SA	POL
Spanish	SA	SPA
Arabic	VIC	ARA
Auslan	VIC	AUS
Bengali	VIC	BEN
Bosnian	VIC	BOS
Chin Hakha	VIC	CHA
Dutch	VIC	DUT
Hebrew	VIC	HEB
Karen	VIC	KAR
Macedonian	VIC	MAC
Persian	VIC	PER
Portuguese	VIC	POR
Romanian	VIC	ROM
Russian	VIC	RUS
Sinhala	VIC	SIN
Turkish	VIC	TUR
Vietnamese	VIC	VIE

Note: all Interstate Language courses have both a practical and written examination.

Appendix C: Materials required/recommended for written examinations 2026

Further details regarding ATAR course and examination requirements can be found by accessing the course syllabus at <https://senior-secondary.scsa.wa.edu.au/syllabus-and-support-materials>.




Standard items: pens, pencils, sharpener, eraser, correction fluid/tape, ruler, highlighters.




(Note: coloured pencils are allowed in all examinations).



Note: do not use erasable or gel pens.

The ink in some erasable and gel pens is heat sensitive and your writing can be affected when exposed to heat.



Key

- π Up to three calculators, which do not have the capacity to create or store programs or text, are permitted in these examinations. Any brands or models of these calculators are permitted.
- ∞ Up to three calculators, which can include scientific, graphic and Computer Algebra System (CAS) calculators, are permitted in the *Section Two: calculator-assumed* section of the mathematics examinations. Any brands or models of these calculators are permitted.
-  Dictionary: refer to Appendix D/E: Dictionaries approved for use in ATAR course examinations and Interstate Language examinations 2026.
-  Drawing/measuring aids: details can be found in the examination design brief within the course syllabus.
-  Notes: refer to *Year 12 Information Handbook Part II* for details regarding the use of notes in the Mathematics Applications, Mathematics Methods and Mathematics Specialist examinations.

Written examination	Calculator	Dictionary	Drawing/ measuring aids	Other
Aboriginal and Intercultural Studies				
Accounting and Finance	π			
Agribusiness	π			
Agricultural Science and Technology	π			
Ancient History				
Applied Information Technology				
Aviation	π			Flight computer
Biology	π			
Business Management and Enterprise	π			
Chemistry	π			
Chinese: First Language				
Chinese: Second Language				
Computer Science	π			
Dance				
Design				

Written examination	Calculator	Dictionary	Drawing/ measuring aids	Other
Drama				
Earth and Environmental Science	π			
Economics	π			
Engineering Studies	π			
English				
English as an Additional Language or Dialect		🔍		
Food Science and Technology	π			
French: Background Language		🔍		
French: Second Language		🔍		
Geography	π			
German: Background Language		🔍		
German: Second Language		🔍		
Health Studies				
Hindi: Background Language		🔍		
Hindi: Second Language		🔍		
Human Biology	π			
Indonesian: Background Language		🔍		
Indonesian: Second Language		🔍		
Italian: Background Language		🔍		
Italian: Second Language		🔍		
Japanese: Second Language		🔍		
Korean: Background Language		🔍		

Key

- π Up to three calculators, which do not have the capacity to create or store programs or text, are permitted in these examinations. Any brands or models of these calculators are permitted.
- ∞ Up to three calculators, which can include scientific, graphic and Computer Algebra System (CAS) calculators, are permitted in the *Section Two: calculator-assumed* section of the mathematics examinations. Any brands or models of these calculators are permitted.
- 🔍 Dictionary: refer to Appendix D/E: Dictionaries approved for use in ATAR course examinations and Interstate Language examinations 2026.
-  Drawing/measuring aids: details can be found in the examination design brief within the course syllabus.
-  Notes: refer to *Year 12 Information Handbook Part II* for details regarding the use of notes in the Mathematics Applications, Mathematics Methods and Mathematics Specialist examinations.

Written examination	Calculator	Dictionary	Drawing/ measuring aids	Other
Korean: Second Language		🔍		
Literature				
Marine and Maritime Studies	π			
Materials Design and Technology	π			
Mathematics Applications	∞		✎	📄
Mathematics Methods	∞		✎	📄
Mathematics Specialist	∞		✎	📄
Media Production and Analysis				
Modern History				
Music				
Outdoor Education			✎	
Philosophy and Ethics				
Physical Education Studies				
Physics	π		✎	
Politics and Law				
Psychology	π			
Punjabi: Background Language		🔍		
Punjabi: Second Language		🔍		
Religion and Life				
Tamil: Background Language		🔍		
Tamil: Second Language		🔍		
Visual Arts				

Calculators in ATAR course examinations

Calculators may be used in designated 2026 ATAR course examinations under the following conditions:

- Calculators must be silent, hand-held and contain their own power source (battery or solar operated).
- Calculators must not have the functionality to communicate wirelessly.
- Candidates will be entirely responsible for ensuring adequate power supply to their calculators and the proper working order of their calculators. If a candidate's calculator malfunctions during an examination, they will not be provided with a calculator.
- Candidates must supply and be able to change their own spare batteries – any battery failure or other fault which limits the usefulness of a calculator during an examination will not be taken into special consideration.
- No candidate may borrow a calculator from another candidate after entering the examination room.
- Calculator instruction booklets and removable covers are classified as unauthorised materials and must not be taken into an examination room.
- Calculator memories do not have to be cleared before entry to an examination.

Appendix D: Dictionaries approved for use in ATAR course examinations 2026

Course	Practical (oral) examination	Written examination
Chinese: First Language	Not applicable.	During reading and working time: Monolingual and/or bilingual printed dictionaries. Note: dictionaries must not contain any notes or other marks. No electronic dictionaries are allowed.
Chinese: Second Language	During Part A only. One combined print dictionary (Chinese/English and English/Chinese dictionary) or two separate print dictionaries (one English/Chinese dictionary and one Chinese/English dictionary). Note: dictionaries must not contain any notes or other marks. No electronic dictionaries are allowed.	During reading and working time: One combined print dictionary (Chinese/English and English/Chinese dictionary) or two separate print dictionaries (one English/Chinese dictionary and one Chinese/English dictionary). Note: dictionaries must not contain any notes or other marks. No electronic dictionaries are allowed.
French: Background Language	No dictionaries permitted.	During reading and working time: Monolingual and/or bilingual printed dictionaries. Note: dictionaries must not contain any notes or other marks. No electronic dictionaries are allowed.
French: Second Language	During Part A only. One combined print dictionary (French/English and English/French dictionary) or two separate print dictionaries (one English/French dictionary and one French/English dictionary). Note: dictionaries must not contain any notes or other marks. No electronic dictionaries are allowed.	During reading and working time: One combined print dictionary (French/English and English/French dictionary) or two separate print dictionaries (one English/French dictionary and one French/English dictionary). Note: dictionaries must not contain any notes or other marks. No electronic dictionaries are allowed.
German: Background Language	No dictionaries permitted.	During reading and working time: Monolingual and/or bilingual printed dictionaries. Note: dictionaries must not contain any notes or other marks. No electronic dictionaries are allowed.
German: Second Language	During Part A only. One combined print dictionary (German/English and English/German dictionary) or two separate print dictionaries (one English/German dictionary and one German/English dictionary). Note: dictionaries must not contain any notes or other marks. No electronic dictionaries are allowed.	During reading and working time: One combined print dictionary (German/English and English/German dictionary) or two separate print dictionaries (one English/German dictionary and one German/English dictionary). Note: dictionaries must not contain any notes or other marks. No electronic dictionaries are allowed.

Course	Practical (oral) examination	Written examination
Hindi: Background Language	No dictionaries permitted.	During reading and working time: Monolingual and/or bilingual printed dictionaries. Note: dictionaries must not contain any notes or other marks. No electronic dictionaries are allowed.
Hindi: Second Language	No dictionaries permitted.	During reading and working time: Monolingual and/or bilingual printed dictionaries. Note: dictionaries must not contain any notes or other marks. No electronic dictionaries are allowed.
Indonesian: Background Language	No dictionaries permitted.	During reading and working time: Monolingual and/or bilingual printed dictionaries. Note: dictionaries must not contain any notes or other marks. No electronic dictionaries are allowed.
Indonesian: Second Language	During Part A only. One combined print dictionary (Indonesian/English and English/Indonesian dictionary) or two separate print dictionaries (one English/Indonesian dictionary and one Indonesian/English dictionary). Note: dictionaries must not contain any notes or other marks. No electronic dictionaries are allowed.	During reading and working time: One combined print dictionary (Indonesian/English and English/Indonesian dictionary) or two separate print dictionaries (one English/Indonesian dictionary and one Indonesian/English dictionary). Note: dictionaries must not contain any notes or other marks. No electronic dictionaries are allowed.
Italian: Background Language	No dictionaries permitted.	During reading and working time: Monolingual and/or bilingual printed dictionaries. Note: dictionaries must not contain any notes or other marks. No electronic dictionaries are allowed.
Italian: Second Language	During Part A only. One combined print dictionary (Italian/English and English/Italian dictionary) or two separate print dictionaries (one English/Italian dictionary and one Italian/English dictionary). Note: dictionaries must not contain any notes or other marks. No electronic dictionaries are allowed.	During reading and working time: One combined print dictionary (Italian/English and English/Italian dictionary) or two separate print dictionaries (one English/Italian dictionary and one Italian/English dictionary). Note: dictionaries must not contain any notes or other marks. No electronic dictionaries are allowed.
Japanese: Second Language	During Part A only. One combined print dictionary (Japanese/English and English/Japanese dictionary) or two separate print dictionaries (one English/Japanese dictionary and one Japanese/English dictionary). Note: dictionaries must not contain any notes or other marks. No electronic dictionaries are allowed.	During reading and working time: One combined print dictionary (Japanese/English and English/Japanese dictionary) or two separate print dictionaries (one English/Japanese dictionary and one Japanese/English dictionary). Note: dictionaries must not contain any notes or other marks. No electronic dictionaries are allowed.

Course	Practical (oral) examination	Written examination
Korean: Background Language	No dictionaries permitted.	During reading and working time: Monolingual and/or bilingual printed dictionaries. Note: dictionaries must not contain any notes or other marks. No electronic dictionaries are allowed.
Korean: Second Language	No dictionaries permitted.	During reading and working time: Monolingual and/or bilingual printed dictionaries. Note: dictionaries must not contain any notes or other marks. No electronic dictionaries are allowed.
Punjabi: Background Language	No dictionaries permitted.	During reading and working time: Monolingual and/or bilingual printed dictionaries. Note: dictionaries must not contain any notes or other marks. No electronic dictionaries are allowed.
Punjabi: Second Language	No dictionaries permitted.	During reading and working time: Monolingual and/or bilingual printed dictionaries. Note: dictionaries must not contain any notes or other marks. No electronic dictionaries are allowed.
Tamil: Background Language	No dictionaries permitted.	During reading and working time: Monolingual and/or bilingual printed dictionaries. Note: dictionaries must not contain any notes or other marks. No electronic dictionaries are allowed.
Tamil: Second Language	No dictionaries permitted.	During reading and working time: Monolingual and/or bilingual printed dictionaries. Note: dictionaries must not contain any notes or other marks. No electronic dictionaries are allowed.
English as an Additional Language or Dialect	During preparation time only. One print English language dictionary or one print English language learning dictionary. Note: dictionaries must not contain any notes or other marks. No bilingual or electronic dictionary or thesaurus is allowed.	During reading and working time: One print English language dictionary or one print English language learning dictionary. Note: dictionaries must not contain any notes or other marks. No bilingual or electronic dictionary or thesaurus is allowed.

Dictionaries in ATAR course examinations

- Dictionaries are not provided by the Authority.
- Dictionaries cannot contain any handwritten or typewritten notes or other marks and may be inspected during the examination.
- Thesauruses are not permitted.
- Electronic dictionaries are not permitted.

Appendix E: Dictionaries approved for use in Interstate Language course examinations 2026

Further details regarding Interstate Language examination requirements can be found by accessing the course syllabus at <https://senior-secondary.scsa.wa.edu.au/syllabus-and-support-materials>.

Standard items: pens, pencils, sharpener, eraser, correction fluid/tape, ruler, highlighters.
(Note: coloured pencils are allowed in all examinations).

Practical (oral) examination: no dictionaries permitted.

Written examination: candidates are allowed to use monolingual and/or bilingual printed dictionaries.

Interstate Language courses

Arabic	Macedonian
Armenian	Modern Greek
Auslan	Nepali
Bengali	Persian
Bosnian	Polish
Chin Hakha	Portuguese
Chinese: Background Language (Chinese in Context NSW)	Romanian
Croatian	Russian
Dutch	Serbian
Filipino	Sinhala
Hebrew	Spanish
Hungarian	Swedish
Japanese: Background Language (Japanese in Context NSW)	Turkish
Karen	Vietnamese
Khmer	

WACE Refreshment

The Board of the School Curriculum and Standards Authority (the Authority) is undertaking the Western Australian Certificate of Education (WACE) Refreshment to ensure the WACE continues to maximise its value for students as they move into further education, training, and employment.

Current

C grade equivalent

From 2025, students who achieve a D grade for any pair of completed Year 12 ATAR course units and a moderated written school mark or ATAR course written examination mark at or above a specified cut point of approximately 40, as determined by the Authority for each course, receive a C grade equivalent for that pair of units. The C grade equivalent can contribute to meeting WACE requirements, if all course completion requirements for the WACE have been met for that course. The C grade equivalent reflects the pitch of the course content and rigour of the teaching, learning and assessment programs of Year 12 ATAR courses.

To be introduced

If you are a Year 11 student enrolled in Year 12 courses and will be completing your WACE in 2027 or beyond, you should be aware of the following WACE Refreshments.

Diploma-level qualification

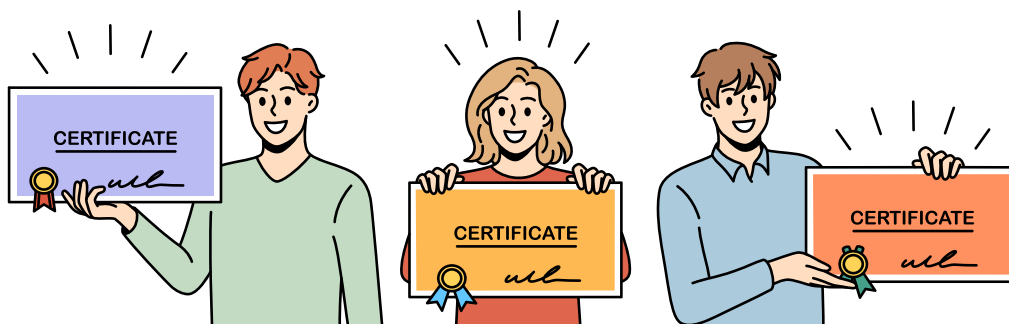
From 2027, students who complete or partially complete a Diploma-level qualification will no longer receive unit equivalents for these qualifications towards WACE achievement. Any Diploma-level qualification completed in 2027 and beyond will not be recorded on the student's WASSA (see Section 4).

From 2028, the Authority will only provide unit equivalents from Certificate IV level qualifications where these qualifications appear on the Authority's specified list.

Tertiary Preparation Endorsed Programs (TPEPs)

From 2027, students who select a TPEP to gain unit equivalence will be required to complete at least one Year 12 ATAR course. It is recommended that students intending to undertake a Year 12 ATAR course consider also undertaking the ATAR course/s in Year 11.

In the context of ATAR courses in the WACE, the term 'complete' requires that a student sits the ATAR course examination or has an approved Sickness/Misadventure Application for not sitting the examination in that course. Students who do not sit the ATAR course examination and do not have an approved Sickness/Misadventure Application will not have a course mark or grade recorded on their WASSA, nor will they receive an ATAR course report. For courses with a practical component, students must complete the written and practical examinations.



Notes

You can type notes directly into this PDF and save your changes locally.

© School Curriculum and Standards Authority

Street address: 303 Sevenoaks Street, CANNINGTON WA 6107

Postal address: PO Box 816, CANNINGTON WA 6987

Telephone: (08) 9273 6300

Email: info@scsa.wa.edu.au

Website: www.scsa.wa.edu.au

Facebook: facebook.com/scsawa

ISSN 1838-1162

HPRM: 2026/

Images: Aleksei Morozov, iStock

