



Government of **Western Australia**  
School Curriculum and Standards Authority



# The WACE 2025

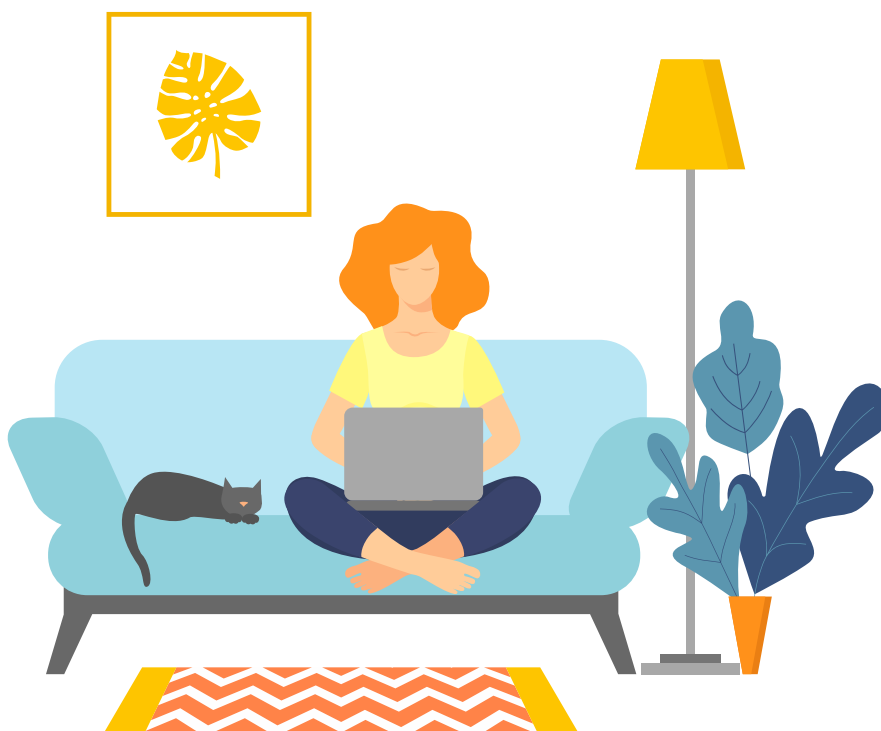
**Your guide to the:**

- Western Australian Statement of Student Achievement
- Western Australian Certificate of Education
- ATAR Course Report

[www.scsa.wa.edu.au](http://www.scsa.wa.edu.au)

## Acknowledgement of Country

Kaya. The School Curriculum and Standards Authority (the Authority) acknowledges that our offices are on Whadjuk Noongar boodjar and that we deliver our services on the country of many traditional custodians and language groups throughout Western Australia. The Authority acknowledges the traditional custodians throughout Western Australia and their continuing connection to land, waters and community. We offer our respect to Elders past and present.



## Certification for Year 12s in 2025

To achieve a Western Australian Certificate of Education (WACE) in 2025, students have a choice of undertaking an ATAR pathway, studying four or more ATAR courses; or selecting five General courses or a combination of General and up to three ATAR courses; or completing a Certificate II or higher VET qualification in combination with combination ATAR, General or Foundation courses.

A detailed explanation of the WACE requirements is provided on the reverse side of the Western Australian Statement of Student Achievement (WASSA). This information can also be found in the *Year 12 Information Handbook 2025, Part I: Information for all students*, which is available on the School Curriculum and Standards Authority (the Authority) website via [www.scsa.wa.edu.au](http://www.scsa.wa.edu.au).

## Western Australian Certificate of Education

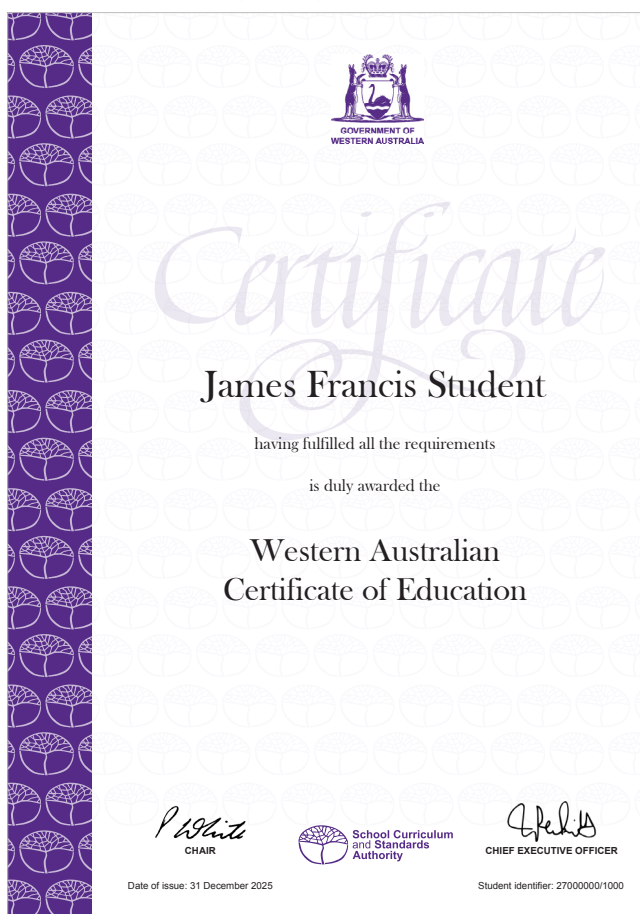
The senior secondary certificate of education issued in Western Australia to Year 12 students who meet the specified requirements is the Western Australian Certificate of Education (WACE).

A student who meets the requirements of the WACE in 2025 will be issued with the certificate. In mid-January 2026, students will be able to download digital copies of their WACE. Note: the Authority no longer provides paper copies of the WACE.

Students will generally take two years to achieve the requirements of the WACE; however, these requirements may be met over a lifetime. The WACE is recognised nationally in the Australian Qualifications Framework and by universities and other tertiary institutions, industry and training providers.

During 2024 and 2025, senior secondary school students studied a combination of course units, vocational education and training (VET) and endorsed programs.

A detailed explanation of the WACE requirements is provided on the reverse side of the WASSA. This information can also be found in the *Year 12 Information Handbook 2025, Part I: Information for all students*, which is available on the Authority website via [www.scsa.wa.edu.au](http://www.scsa.wa.edu.au).



Sample Western Australian Certificate of Education

### Lifelong learning

Courses studied towards the WACE pre-2016 are listed separately on the WASSA. The information provided will include the course stage, grade and score. Students who have achieved the WACE prior to 2016 and have completed further secondary studies will have this information included on their WASSA. It should be noted that the 2016 to 2025 WACE requirements (such as the literacy and numeracy standard) may not have been met by these students. Their previous achievement of the WACE is retained. Students who are yet to meet the WACE requirements need to meet those in place at the time of completion.



# Western Australian Statement of Student Achievement

Students who have completed any course unit, vocational education and training (VET) unit of competency or endorsed program will, at the end of Year 12, receive a Western Australian Statement of Student Achievement (WASSA). In mid-January 2026, students who completed Year 12 in 2025 will be able to download digital copies of their WASSA. Note: the Authority no longer provides paper copies of the WASSA.

The WASSA is a cumulative record of student achievement but excludes results achieved in an ATAR course examination as a non-school candidate. Studies undertaken but not completed are not reported.

Explanations of the key sections of the WASSA are outlined as follows.

## 1 Western Australian Certificate of Education

This section lists whether or not the WACE has been achieved by the student. Where the WACE is not achieved, it could be achieved at a later date. It should be noted that the WACE requirements may change over time and students studying towards the achievement of the WACE after they leave school will need to meet the WACE requirements current at the time of their completion of the WACE.

## 2 Literacy and numeracy standard

This section lists whether or not the standard was demonstrated for literacy (reading and writing) and numeracy. The literacy and numeracy standard can be demonstrated either:

- through the Online Literacy and Numeracy Assessment (OLNA), or
- by achieving the required level in the associated components of reading, writing or numeracy in the Year 9 National Assessment Program – Literacy and Numeracy (NAPLAN) tests.

To demonstrate the minimum WACE literacy standard, students are required to satisfy both the reading and writing standard through either NAPLAN or the OLNA.

If students do not demonstrate the literacy and numeracy standard by the time they exit secondary school, they can apply to the Authority to re-sit the assessment at any age by completing the online application process accessible via the OLNA web page (<https://senior-secondary.scsa.wa.edu.au/assessment/olna>).

**Government of Western Australia  
School Curriculum  
and Standards Authority**

James Francis Student Student Identifier: 27000000/1000  
Date of Issue: 31 December 2025  
Page: 1 of 2

**Western Australian Certificate of Education** **1**  
Achieved

**Literacy and numeracy standard** **2**  
Reading standard Demonstrated  
Writing standard Demonstrated  
Numeracy standard Demonstrated

**Achievement in WACE course units** **3**

Year	Course	Year	Course	Course Type	School Grade	School Mark	Combined Score
2025	Year 12	Biology (ATBLY)	ATAR	B	66	61.87	
2025	Year 12	Chemistry (ATCHE)	ATAR	C	53	58.95	
2025	Year 12	English (A2ENG)	ATAR	B	67	65.57	
2025	Year 12	Mathematics Methods (ATMAM)	ATAR	C	54	55.29	
2025	Year 12	Physics (GTPHY)	General	C	55		
2024	Year 11	Biology (A1BLY)	ATAR	B	68		
2024	Year 11	Biology (A2BLY)	ATAR	B	68		
2024	Year 11	Chemistry (A1CHE)	ATAR	A	77		
2024	Year 11	Chemistry (A2CHE)	ATAR	B	66		
2024	Year 11	English (A1ENG)	ATAR	B	66		
2024	Year 11	English (A2ENG)	ATAR	B	66		
2024	Year 11	Mathematics Methods (A1MAM)	ATAR	C	52		
2024	Year 11	Mathematics Methods (A2MAM)	ATAR	C	55		
2024	Year 11	Physics (A1PHY)	ATAR	D	44		
2024	Year 11	Physics (A2PHY)	ATAR	D	42		

**Achievement of endorsed programs** **5**  
The Western Australian Statement of Student Achievement lists endorsed programs reported by Sample Senior High School.

**Authority-developed**  
2025 School Curriculum and Standards Authority: Administration and Management  
2025 School Curriculum and Standards Authority: Workplace Learning (110 workplace hours completed)

**Community service** **6**  
70 hours of community service have been undertaken during senior secondary schooling

\*\*\*\*\* Achievements and qualifications listed below this line are not awarded \*\*\*\*\*  
by the School Curriculum and Standards Authority and need to be verified  
by sighting the relevant certificate.

**Achievement of endorsed programs** **7**  
The Western Australian Statement of Student Achievement lists endorsed programs reported by Sample Senior High School.

**Provider-developed**  
2024 Leeuwin Ocean Adventure Foundation: Youth Explorer Voyage  
2024 Royal Life Saving Society WA Inc: Bronze Medallion

**School-developed**  
2024 Sample Senior High School: Eco Leader 1

Continued on the next page

Issued by the School Curriculum and Standards Authority without alteration or erasure

**Government of Western Australia  
School Curriculum  
and Standards Authority**

James Francis Student Student Identifier: 27000000/1000  
Date of Issue: 31 December 2025  
Page: 2 of 2

**Achievement of vocational education and training qualifications** **8**  
The Western Australian Statement of Student Achievement lists vocational education and training (VET) completed through a registered training organisation (RTO). Verification of achievements should be made with the relevant RTO.

**Competencies in vocational education and training**  
The following units of competency, as recognised within the Australian Qualifications Framework, have been delivered through Sample RTO (1234) RTO.  
The units of competency listed below contribute towards the achievement of:  
**SIS30115 Certificate III in Sport and Recreation**

Year	Code	Name of Unit of Competency
2025	BSBWOR204	Use business technology
2025	HLTAID003	Provide first aid
2025	ICTWEB201	Use social media tools for collaboration and engagement

**Achievement of vocational education and training skill sets** **9**  
The Western Australian Statement of Student Achievement lists the Department of Training and Workforce Development (DTWD) funded skill sets completed through an RTO. Verification of achievements should be made with the relevant RTO.

**Competencies in vocational education and training**  
The following units of competency, as recognised within the AQF, have been delivered through Sample RTO (1234) RTO.  
The units of competency listed below contribute towards the achievement of:  
**AE278 Green Jobs – Safety Skill Set**

Year	Code	Name of Unit of Competency
2025	AHCWHS201	Participate in work health and safety processes
2025	AHCWRK204	Work effectively in the industry
2025	AHCWRK205	Participate in workplace communications
2025	AHCWRK209	Participate in environmentally sustainable work practices

*P. White*  
CHAIR

*J. White*  
CHIEF EXECUTIVE OFFICER

End of record

Issued by the School Curriculum and Standards Authority without alteration or erasure

Sample Western Australian Statement of Student Achievement

### 3 Achievement in WACE course units

This section lists a student's school-based achievement in ATAR, General and Foundation courses recorded for school grades (A, B, C, D or E) and school marks (out of 100).

A student's school-based achievement for a Year 12 course is recorded for a pair of units (i.e. one mark and one grade). A student's school-based achievement for a Year 11 course is recorded for each pair of units (i.e. one mark and one grade), or for each unit completed (i.e. two marks and two grades).

Students who do not sit an examination, or complete the school-based practical external assessment (SPEA), and do not have an approved sickness/misadventure application (or approved absence for the SPEA), will not have a course grade or mark (i.e. school mark or combined score) recorded on their WASSA, nor will they receive an ATAR course report and the course will not contribute to their WACE.

Student achievement in VET industry specific courses is recorded as 'completed' upon completion of all course requirements. The notation 'completed' counts as a C grade for the WACE requirements.

### 4 Grades in course units

Schools report student achievements in completed ATAR, General and Foundation courses in terms of grades. The grade assigned describes the overall achievement of a student for the completed pair of units (or unit, where a single Year 11 unit is studied). The Authority works with teachers during the year to ensure the comparability of grades between schools.

The grades assigned for course units are:

Grade	Interpretation
A	Excellent achievement
B	High achievement
C	Satisfactory achievement
D	Limited achievement
E	Very low achievement

#### Note: C grade equivalent

From 2025, students who achieve a D grade for any completed Year 12 ATAR course and a moderated written school mark or ATAR course written examination mark at or above the specified cut point of approximately 40, as determined by the Authority for each course, will receive a C grade equivalent for that pair of units. The C grade equivalent can

contribute to meeting WACE requirements if all course completion requirements for WACE have been met for that course. The C grade equivalent reflects the pitch of the course content and the rigour of the teaching, learning and assessment programs of Year 12 ATAR courses.

The C grade equivalent will support students who have taken a Year 12 ATAR course to meet the WACE requirements of a 'minimum of six C grades (or the equivalent) in Year 12 units'. The C grade equivalent will be applied to as many Year 12 ATAR courses as relevant for a student.

The C grade equivalent is shown as a D\* for the school grade with a note: 'D\* indicates a C grade equivalent was applied for this course'.

### 5 Achievement of endorsed programs

This section lists the endorsed programs successfully completed by the student in Years 10, 11 and/or 12, as reported by the school where external certification was not required.

For the Workplace Learning program, the total number of hours completed in the workplace is also reported.

Programs endorsed by the Authority recognise significant learning that is not covered by WACE courses.

Should a student exceed the maximum unit equivalence allowed for endorsed programs, these additional achievements do not contribute to the WACE requirements but are reported on the student's WASSA.

Successfully completed programs are listed in the relevant category.

### 6 Community service

Community service supports the development of leadership skills, social responsibility and citizenship. The WASSA records the total number of community service hours completed by students in Years 10, 11 and/or 12, as reported by the school.

### 7 Achievement of endorsed programs

This section lists the endorsed programs successfully completed by the student in Years 10, 11 and/or 12, as reported by the school where external certification was required.

### 8 Achievement of vocational education and training qualifications

This section lists the units of competency achieved by the student in VET programs in Years 10, 11 and/or 12, as reported by the school, and

the qualification that the units of competency contribute towards. The name of the registered training organisation that delivered the training is also recorded.

## 9 Achievement of vocational education and training skill sets

This section lists the Department of Training and Workforce Development (DTWD) funded VET skill sets units achieved by the student in Years 11 and 12, as reported by the school.

### Not shown in the sample WASSA

#### Exhibitions and awards

This section lists any exhibitions or awards achieved by the student. Details of the eligibility requirements for exhibitions and awards are available from the Authority website. The Authority grants the following awards:

- Beazley Medal: WACE<sup>†</sup>
- Beazley Medal: VET<sup>†</sup>
- General exhibitions<sup>†</sup>
- General exhibition (ATSI)<sup>†</sup>
- Special general awards<sup>†</sup>
- Subject exhibitions<sup>†</sup>
- Special subject awards<sup>†</sup>
- VET exhibitions<sup>†</sup>
- Special VET awards<sup>†</sup>
- Certificates of excellence
- Special certificates of excellence
- Certificates of distinction
- Certificates of merit.

The names of winners of the exhibitions and awards are published on the Authority website on **Monday, 22 December 2025**. Certificates for awards not presented at the Exhibitions and Awards Ceremony are available for download at the same time as the WASSA.

<sup>†</sup> These awards will be issued to award recipients at the Exhibitions and Awards Ceremony in **February 2026**.

Certificates for awards not presented at the Exhibitions and Awards Ceremony will be available for download in February 2026.

#### Achievement of Preliminary course units

This section lists any Preliminary course units completed and reported by the school to the Authority. Preliminary courses comprise four units. Each unit is studied and reported separately.

Preliminary courses do not contribute towards the achievement of the WACE.

## Summary of the WACE requirements

To qualify for a WACE, students must successfully meet a number of requirements relating to breadth and depth, an achievement standard and the literacy and numeracy standard in their senior secondary schooling. These requirements are listed below.

### Breadth and depth

- Completion of a minimum of 20 units, or the equivalent. This requirement must include at least:
  - ten Year 12 units, or the equivalent
  - four units from an English learning area course, post-Year 10, including at least one pair of Year 12 units from an English learning area course
  - one pair of Year 12 units from each of List A (arts/languages/social sciences) and List B (mathematics/science/technology).

### Achievement standard

- Achievement of at least 14 C grades or higher (or the equivalent) in Year 11 and Year 12 units, with a minimum of six C grades (or the equivalent) in Year 12 units.
- Completion of:
  - at least four Year 12 ATAR courses, **or**
  - at least five Year 12 General courses (or a combination of General and up to three Year 12 ATAR courses) or equivalent, **or**
  - a Certificate II (or higher) VET qualification in combination with ATAR, General or Foundation courses. Note: the partial completion of a Certificate III or higher VET qualification may meet this requirement, as outlined in the *WACE Manual 2025*.

### Literacy and numeracy standard

- Demonstration of the minimum standard of literacy and numeracy.

### Additional information

A student can repeat course units; however, repeated course units do not contribute to the WACE requirements more than once. If the course unit has been repeated, the highest grade recorded for the unit will be used when determining if the achievement standard has been met.

For courses that have defined contexts (Design and Materials Design and Technology), students can complete units in different contexts of the course. These units are not considered repeat units. In the case of Design, students can enrol in more than one context in the course but only a maximum of four

units will count towards WACE requirements. For Materials Design and Technology, students can enrol in, and gain credit towards the WACE, in up to:

- four ATAR course units (two at Year 11 and two at Year 12) in conjunction with four General course units from another defined context (two at Year 11 and two at Year 12)
- eight General course units (four at Year 11 and four at Year 12) from two different, defined contexts.

Where students do not sit an ATAR course examination and they do not have an approved sickness/misadventure application for not sitting the examination in that course, the pair of Year 12 units completed will not contribute towards any of the WACE requirements. From 2025, the Physical Education Studies Year 12 ATAR course includes a SPEA that students must complete to satisfy the completion requirement for the course.

### Vocational education and training (VET)

Nationally recognised VET completed in Years 10, 11 and/ or 12 may contribute towards the achievement of a WACE. All VET qualifications require registered training organisation (RTO) delivery, assessment and quality control under the relevant VET regulatory body. In 2025, a Certificate II or higher is one of the requirements for achieving a WACE if a student is not undertaking a program of study of either at least four Year 12 ATAR courses or at least five Year 12 General courses (or a combination of General and up to three Year 12 ATAR courses). VET qualifications may contribute as WACE course units if undertaken as a part of a VET industry specific course or as unit equivalents if achieved as VET credit transfer.

VET industry specific courses contribute towards the WACE in the same way as other WACE courses. The qualifications specified in VET industry specific courses are packaged as two or four WACE course units. For VET industry specific courses, both Year 11 units and Year 12 units are reported as pairs.

Since 2023, VET skill sets were available to Year 11 and Year 12 students for the first time. Achievement of DTWD funded VET skill sets appears on the student's WASSA but will not contribute towards meeting the WACE requirements.

VET undertaken independently of a VET industry specific course is called VET credit transfer. Qualifications that are completed through VET credit transfer are awarded unit equivalence towards the WACE.

A VET Unique Student Identifier (USI) is required for a unit of competency, skill set or qualification result

to contribute towards the WACE requirements. It encompasses all of VET. VET achievements without a USI will not appear on the student's WASSA and will not contribute towards the requirements of a student's WACE.

### VET and the breadth and depth requirement

VET industry specific courses require students to achieve specified units of competency, successfully complete a full qualification and fulfill the mandatory workplace learning requirement. Once all requirements are met, VET industry specific course units are recorded as 'completed' and contribute in the same manner as a C grade or higher in other WACE course units.

VET unit equivalence towards the WACE is allocated for the successful completion of a full qualification through VET credit transfer. A maximum of eight units (four in Year 11 and four in Year 12) may be used towards the WACE requirements. A summary of the credit for completed qualifications and their unit equivalents is provided in Table 1.

**Table 1. Credit for completed VET qualifications and their unit equivalents**

Completed qualification	Total equivalents	Year 11 credit allocation (unit equivalents)	Year 12 credit allocation (unit equivalents)	Satisfies the minimum VET qualification requirement for WACE
Certificate I	2 units	2	0	No
Certificate II	4 units	2	2	Yes
Certificate III or higher – Partial*	4 units	2	2	Yes
Certificate III or higher – Full	6 units	2	4	Yes

\* under specific conditions

### VET and the achievement standard requirement

The Certificate II or higher WACE requirement can be met through the achievement of qualifications as a VET industry specific course or VET credit transfer.

Each unit equivalent achieved through VET credit transfer directly reduces the number of C grades required to meet the C grade requirement (14 C grades or better, with a minimum of six C grades in Year 12) up to a maximum of eight unit equivalents (four in Year 11 and four in Year 12). Completed VET industry specific course units contribute in the same manner as a C grade or higher in a WACE course and do not affect the unit equivalence limit.

## Endorsed programs

Endorsed programs address areas of learning not covered by WACE courses or VET programs.

There are now four categories of endorsed programs: Authority-developed, Provider-developed, School-developed and Tertiary preparation endorsed programs. These programs can be delivered in a variety of settings, including schools, community organisations, universities, training organisations and workplaces.

Achievements in endorsed programs may contribute to the WACE through unit equivalents. A student can accrue up to four unit equivalents from successful completion of endorsed programs. Endorsed program unit equivalents are allocated by the Authority at either Year 11 or Year 12 in the manner that best advantages the student (up to a maximum of two in Year 11 and two in Year 12). Endorsed programs can contribute to the WACE C grade requirement. A C grade in a maximum of four units can be replaced by unit equivalents from the completion of endorsed programs (two units in Year 11 and two units in Year 12).

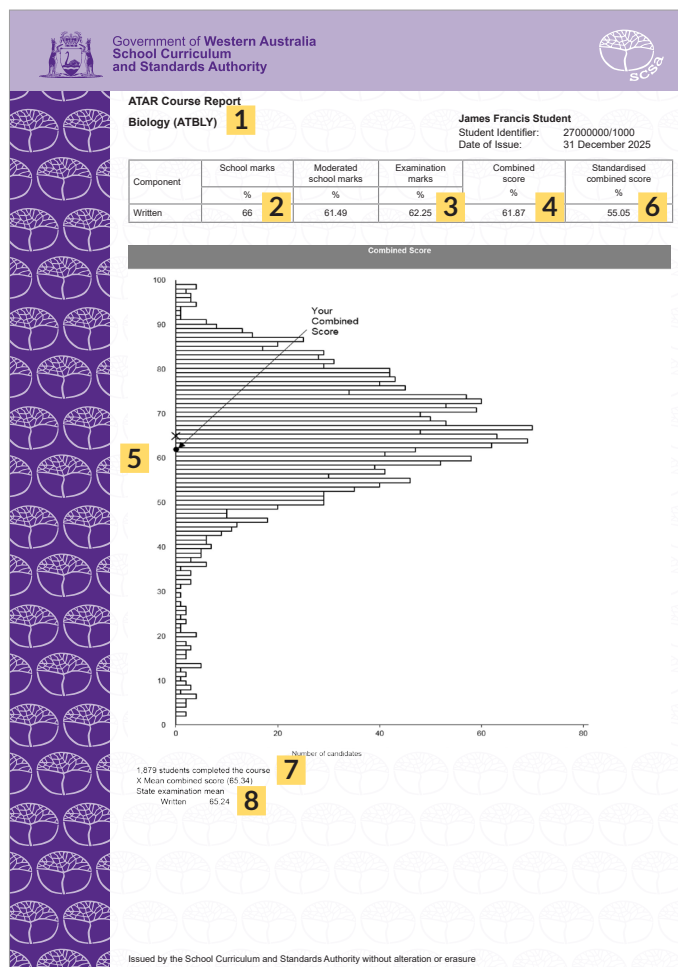
## ATAR Course Report

A student who sits an ATAR course examination is issued with an ATAR course report. In mid-January 2026, students will be able to download digital copies of their course reports. Note: the Authority no longer provides paper copies of the ATAR course report. The ATAR course report shows the student's achievement in relation to the achievement of other students for the course.

ATAR course reports are **not** issued for students who:

- did not sit the ATAR course examination and do not have an approved sickness/misadventure application for that course examination. For ATAR courses with practical examinations, students must complete both the written and practical examinations
- did not sit the SPEA for the Physical Education Studies Year 12 ATAR course and do not have an approved *Physical Education Studies: School-based Practical External Assessment Application for Approved Absence*
- are non-school candidates in the ATAR course examination.

Explanations of the key sections of the ATAR course report are outlined below.



Sample ATAR course report

### 1 Course

This identifies the course in which the student was examined.

### 2 School marks

For a written and, where relevant, practical component of a course, a school mark out of 100 is provided by the school for the pair of units completed in the year of sitting the ATAR course examination.

The school marks are then statistically moderated using the ATAR course examination marks achieved by students for the course at the school.

Both the school mark and moderated school mark are listed on the student's ATAR course report. For courses with a written and a practical component, marks are shown separately for each component.

### 3 Examination marks

For a written and, where relevant, practical component of a course, an ATAR course examination mark is recorded as a mark out of 100.

The ATAR course examination mark is listed on the student's ATAR course report. For courses with a

written and a practical ATAR course examination, marks are shown separately for each component.

The SPEA mark awarded by the Authority is included in the ATAR course report as the Physical Education Studies Year 12 ATAR practical examination mark.

#### 4 Course combined scores (derived from combined marks)

For an ATAR course with only a written component, a student's combined mark is also the combined score for the course.

For an ATAR course which has both a written component and a practical component:

- the combined mark for the written component of the course is the average of the student's written examination mark and the student's moderated written school mark
- the combined mark for the practical component of the course is the average of the student's practical examination mark and the student's moderated practical school mark.

Combined marks of written and practical components are then equated (to place them on the same scale) and then weighted, in accordance with syllabus specification, to produce the combined score for the course.

For more details about statistical moderation and the production of the combined scores, see the *Your Marks* brochure, which is available on the Authority website via <https://senior-secondary.scsa.wa.edu.au/assessment/examinations/your-marks>.

#### 5 Combined score distribution

The graph illustrates the distribution of the combined scores achieved by all students for the pair of units examined. A student's combined score for the course is indicated by a dot in bold type.

#### 6 Standardised combined score

The standardised combined scores have a distribution with a mean close to 60 and a standard deviation close to 14. The combined scores are standardised to ensure that the course variations between years are taken into consideration. The standardised combined scores are used by the Tertiary Institutions Service Centre (TISC) in the marks adjustment process.

#### 7 Total number of candidates

This is the total number of students who sat the ATAR course examination for the course.

#### 8 Means of examination marks and combined scores

These are the means of the examination marks and combined scores for all students who sat the ATAR course examination for the course.

#### Candidate applications relating to ATAR course examinations

After candidates have received their results, they may choose to submit an application for further information relating to their 2025 ATAR course examinations. The applications are listed below and can be accessed from early November 2025 at <https://www.scsa.wa.edu.au/forms/forms>.

- Results check for 2025 ATAR course examination – closing date **Monday, 5 January 2026**
- Copy of 2025 ATAR course written examination script – closing date **Monday, 19 January 2026**
- Statement of raw examination marks for the 2025 ATAR course examination – closing date **Friday, 30 January 2026**.

From the middle of January 2026, 2025 Year 12 students will be able to download electronic versions of their WASSA, WACE, ATAR course report/s via the student portal via <https://studentportal.scsa.wa.edu.au>. In addition, from mid-February 2026, students will be able to download electronic versions of their award certificates from the student portal.

To access the student portal, students will need their eight digit WA student number (WASN). This number may be found on school reports, SmartRiders or on candidates' ATAR examination timetables. Note: due to privacy and security requirements, the Authority is unable to provide WASNs over the telephone or by email.



© School Curriculum and Standards Authority, 2025

This document – apart from any third party copyright material contained in it – may be freely copied, or communicated on an intranet, for non-commercial purposes in educational institutions, provided that the School Curriculum and Standards Authority (the Authority) is acknowledged as the copyright owner, and that the Authority’s moral rights are not infringed.

Copying or communication for any other purpose can be done only within the terms of the *Copyright Act 1968* or with prior written permission of the Authority. Copying or communication of any third party copyright material can be done only within the terms of the *Copyright Act 1968* or with permission of the copyright owners.

Any content in this document that has been derived from the Australian Curriculum may be used under the terms of the **Creative Commons Attribution 4.0 International** (CC BY) licence.

#### **Disclaimer**

Any resources such as texts, websites and so on that may be referred to in this document are provided as examples of resources that teachers can use to support their learning programs. Their inclusion does not imply that they are mandatory or that they are the only resources relevant to the course.

Images: alla\_snesar via iStock

#### **© School Curriculum and Standards Authority**

Street address: 303 Sevenoaks Street CANNINGTON WA 6107

Postal address: PO Box 816 CANNINGTON WA 6987

Phone: (08) 9273 6300

General email: [info@scsa.wa.edu.au](mailto:info@scsa.wa.edu.au)

Web: [www.scsa.wa.edu.au](http://www.scsa.wa.edu.au)

HPRM: 2025/79937