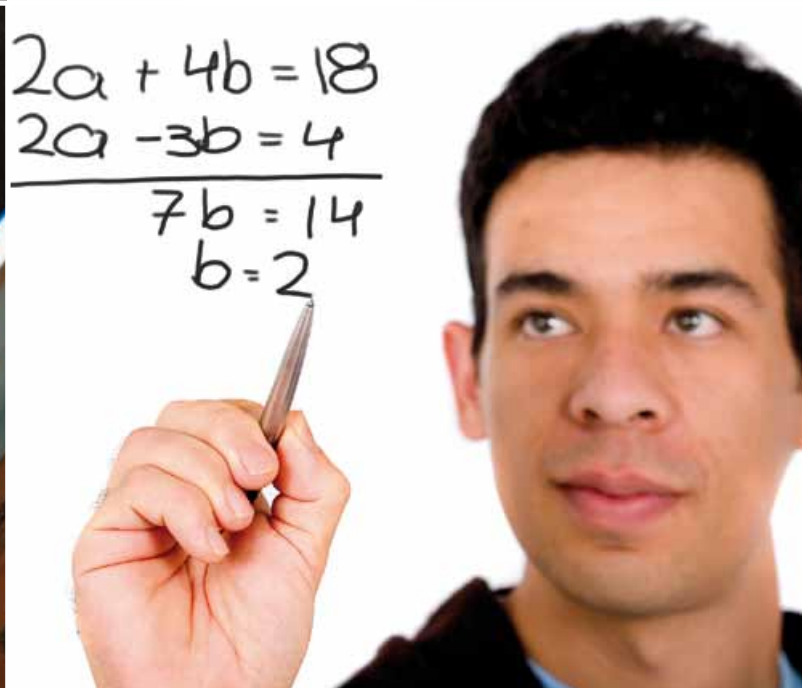


# The WACE

The Western Australian Certificate of Education  
for students starting Year 11 in 2012



Government of Western Australia  
Curriculum Council



CATHOLIC EDUCATION  
OFFICE OF WESTERN AUSTRALIA



ASSOCIATION OF  
INDEPENDENT SCHOOLS OF  
WESTERN AUSTRALIA (INC)



Department of  
Education

# Achieving the WACE

All young people should be encouraged to complete Year 12 and graduate with a WACE. For most, achieving the WACE will take two years, but some may take three years or even longer.

As a minimum, students must complete 20 units, each typically of 55 hours of class time and totalling about 1100 hours, over two years. Most schools have programs where students will complete more than the minimum.

A student's program can include all course units or a mixture of course units, vocational education and training and endorsed programs.

To be awarded the WACE in 2013, a student will need to meet the following requirements:

- complete a minimum of 20 course units or the equivalent, which must include at least:
  - four course units from English, Literature and/or English as an Additional Language/Dialect, studied during Year 11 and Year 12 (at least two of these units must be completed in Year 12)
  - one pair of course units from each of List A (arts/languages/social science) and List B (mathematics/science/technology) completed in Year 12
- achieve a C grade average or better across the best 16 course units, of which at least eight must be completed in Year 12 (completing endorsed programs and/or vocational education and training may reduce the number of course units required for the calculation)
- demonstrate English language competence
- sit WACE examinations for all Stage 2 and Stage 3 pairs of units in which they are enrolled, unless exempt.

(Full details are available on the Curriculum Council website at [www.curriculum.wa.edu.au/internet/Policy/WACE\\_Requirements](http://www.curriculum.wa.edu.au/internet/Policy/WACE_Requirements).)

## Courses and course units

There are 52 WACE courses (listed on the back of this brochure) grouped into List A and List B. Schools will choose to offer the courses to meet the needs and interests of the students in line with the resources available to their school.

The courses:

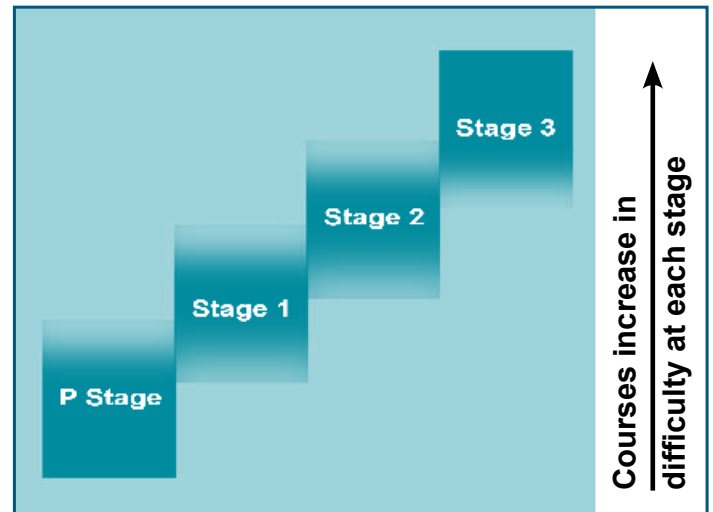
- ensure that students can study similar courses to those offered in other parts of Australia
- provide multiple pathways to university, training and employment.

Courses generally have units structured in three or four stages with an increase of difficulty at each stage (see diagram in the next column). Each unit generally involves 55 hours of class time and is designed to take one semester to complete.

There are generally two units per stage e.g. units 2A and 2B. Preliminary Stage units are available in 19 courses. Additional Stage 1 units are available in 25 courses. Mathematics has additional Stage 2 and Stage 3 units and English has additional Stage 2 units.

Schools may teach units as semester units (e.g. unit 2A

## General course structure



in Semester 1 and unit 2B in Semester 2) or they may combine two units from the same stage of the course (e.g. units 2A and 2B) and teach them together over the full year.

Students should begin with units appropriate to their stage of learning.

Preliminary Stage units provide opportunities for students with special education needs and other students with very limited schooling to develop the skills required to be successful upon leaving school or in the transition to Stage 1 units. Post-school pathways for these students may include TAFE and the workplace.

Stage 1 units are designed as entry-level units and most students who take them should be able to move on to Stage 2 units in Year 12.

Most Year 11 and Year 12 students in Western Australia should be capable of completing Stage 2 units. They are designed to challenge and extend students.

Stage 3 units are generally more difficult and designed to extend the more capable students, many of whom will be intent on gaining entrance to university.

Many students who study Stage 1 or 2 units in Year 12 will also be completing vocational education and training through certificates I, II or III (see below).

## Vocational education and training

The demand for young people with well-developed vocational skills will remain strong in Western Australia. Vocational education and training (VET) programs enable students to gain work skills and experience.

Students can begin job training while still at school. Options include school-based apprenticeships and traineeships and the School Apprenticeship Link program.

Twelve industry specific courses are available (listed on the back of this brochure). Students can achieve certificates I, II or III in the area they choose and use these as credit towards the WACE.

Students studying VET programs can achieve full or partial, nationally recognised qualifications which may provide credit towards the WACE.

## Endorsed programs

Endorsed programs address areas of learning not covered by courses. Examples include Cadets WA, performance in school productions and independently administered examinations in music, speech and drama. Endorsed programs can contribute up to half of a student's WACE requirements.

These programs can be delivered in a variety of settings by schools, community organisations, universities, training organisations and workplaces.

## Community service

All students are encouraged to complete community service during years 10, 11 and 12. Community service helps students develop leadership skills, social responsibility and citizenship. Community service is recorded on a student's statement of results.

## Assessment and standards

All students receive a school grade for each Stage 1, 2 or 3 course unit they complete.

Achievement for each grade is represented as:

A: excellent achievement

B: high achievement

C: satisfactory achievement

D: limited achievement

E: inadequate achievement.

Teachers use the requirements of the unit syllabus to assess the achievement of students.

To assist in their judgement, teachers are provided with grade descriptions and work samples that show what is expected of students for each grade.

For courses with only written examinations, teachers determine a written school mark out of 100 for each Stage 2 and/or Stage 3 unit that a student completes.

For courses with practical examinations, teachers must determine a written school mark out of 100 and a practical school mark out of 100 for each Stage 2 and/or Stage 3 unit that a student completes.

No grade is awarded for Preliminary Stage units. Students are assessed as having 'completed' or 'not completed' the unit requirements.

Vocational education and training assessment is competency-based and specific requirements are outlined in each industry training package.

Endorsed programs are assessed on the requirements of each program.

## WACE examinations

With the exception of the Workplace Learning course, WACE courses include compulsory examinations, typically taken by students completing Year 12. There are separate WACE examinations for Stage 2 and Stage 3. WACE examinations are not held for Stage 1 units. A student enrolled in Stage 1 units can choose to sit either the Stage 2 or Stage 3 WACE examination as a private candidate.

Each WACE examination assesses the specific content, understandings, knowledge and skills described in the syllabus for the pair of units studied. Each syllabus is available on the relevant course page of the Council website at [http://www.curriculum.wa.edu.au/internet/Senior\\_Secondary/Courses/WACE\\_Courses](http://www.curriculum.wa.edu.au/internet/Senior_Secondary/Courses/WACE_Courses).

All WACE examinations have a written paper and some also include a practical, performance or portfolio examination.

## Purpose of WACE examinations

External examinations in the WACE courses provide students and the wider community with confidence about the standards students achieve at the end of Year 12. They also make it possible to compare the achievement of students, regardless of the school attended.

Council's WACE course reports show student performance in Year 12 in each pair of Stage 2 or Stage 3 units studied. WACE course scores in these reports indicate student achievement against the course standards and relative to others in each pair of units studied.

The WACE course score combines the mark(s) from school with the examination mark(s). As the examination(s) in each pair of units is the only assessment taken by all students under the same conditions, the Council uses students' results in their examination(s) for a course to adjust school marks so they are comparable.

WACE course scores provide employers and training organisations with meaningful and comparable data to use when recruiting.

Students' combined scores for either Stage 2 or Stage 3 are also scaled to reflect the differences in difficulty between the courses. Scaled scores are used by the Tertiary Institutions Service Centre (TISC) to determine the Australian Tertiary Admission Ranks (ATARs) for students.

## Exemption from sitting examinations

Year 12 students who are enrolled to complete, in the current year, at least 220 nominal hours of VET (from related industry areas), and are enrolled in three or fewer Stage 2 and/or Stage 3 pairs of units, are eligible to apply for an exemption from sitting the WACE examinations.

Related industry area refers to units of competency that align with a clear industry pathway.

Students enrolled to complete a School Apprenticeship Link program, Aboriginal School Based Traineeship, School Based Traineeship, School Based Apprenticeship or Pre-Apprenticeship are also eligible to apply for an exemption from sitting examinations.

If students are studying more than five courses at Stage 2 or Stage 3, they are required to sit five examinations. They may apply for exemption from sitting examinations in additional courses they are studying.

Applications for exemption from sitting WACE examinations close in mid-June of the year the students will sit the examinations.

## Students who do not sit examinations


A student who should sit a WACE examination but chooses not to (without an approved exemption), or chooses to not make a genuine attempt in the examination, will not get a WACE course score or WACE course report for that course. Grades for those units will not be counted towards the C grade average required for the WACE. However, the school grades for the course will be recorded on the student's statement of results.

## Sample English Stage 3 course report

## Reporting

### WACE course report

A WACE course report will be issued for each Stage 2 (e.g. 2A/2B) or Stage 3 (e.g. 3A/3B) pair of units completed. A sample course report and explanation is provided below. It should be noted that for courses with a practical examination, separate written and practical marks are reported.



# Curriculum Council

## Course Report: English (Stage 3)

**Student details**

---

**Student's school grades**

---

**Student's school marks and WACE exam marks**

---

**Description of standards for each band of WACE course scores**

---

**State-wide distribution of all students who have a WACE course score with the student's individual score shown**

---

**Total number of students who sat the WACE examination**

---

**Explanation of Stage 3, Stage 2, Stage 1 and Preliminary Stage units**

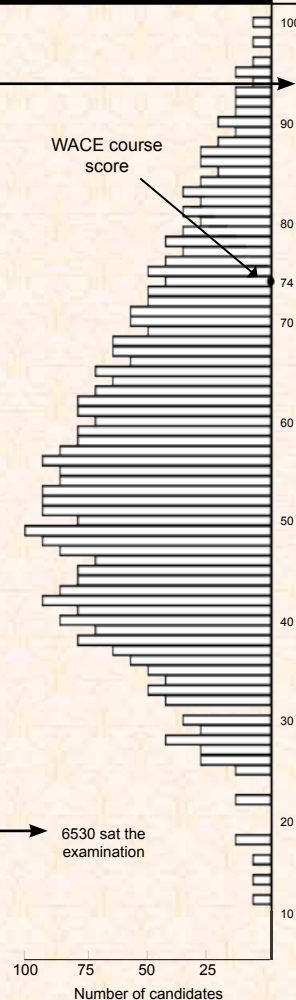
James Frank Student  
Student Identifier: 19468599/4165  
Date of Issue: 30 December 2013

WACE course score 74

School grades Unit 3A **B** Unit 3B **A**

School marks	Raw	Moderated	Examination marks	Raw	Standardised
Written (100%)	67	74.1	Written (100%)	68	74.1

**Stage 3 – WACE score distribution**



WACE course score

6530 sat the examination

Number of candidates

**Stage 3 course achievement: the student demonstrated the following in the examination:**

- Excellent achievement (75-100)**
  - Sustained and sophisticated control over a wide range of written forms, and the ability to communicate with a high degree of confidence, precision and clarity to suit a diversity of contexts, purposes and audiences.
  - Very extensive knowledge, detailed understanding and appreciation of how meaning is shaped through generic conventions and language elements across a range of texts, and the ability to communicate these in very well-organised and supported responses.
  - Highly developed ability to analyse, interpret and critically evaluate the ways in which language shapes how we view ourselves and the world, and to provide comprehensive justification through well-structured argument and evidence.
- High achievement (65-74)**
  - Sustained control over a wide range of written forms, and the ability to communicate with confidence, precision and clarity to suit a diversity of contexts, purposes and audiences.
  - Extensive knowledge, detailed understanding and appreciation of how meaning is shaped through generic conventions and language elements across a range of texts, the ability to communicate these with organised, and supported responses.
  - Ability to thoroughly analyse, interpret and critically evaluate the ways in which language shapes how we view ourselves and the world, and to provide comprehensive justification through well-structured argument and evidence.
- Satisfactory achievement (50-64)**
  - Some control over a range of written forms, and the ability to communicate with confidence, precision and clarity most of the time to suit a diversity of contexts, purposes and audiences.
  - General knowledge, understanding and appreciation of how meaning is shaped through generic conventions and language elements across a range of texts, and the ability to communicate these in organised, supported responses.
  - Some ability to analyse, interpret and critically evaluate the ways in which language shapes how we view ourselves and the world, and to provide some justification through structured argument and evidence.
- Limited achievement (35-49)**
  - Limited control over a range of written forms, occasionally showing the ability to communicate with confidence, precision and clarity to suit some contexts, purposes and audiences.
  - Limited knowledge, understanding and appreciation of how meaning is shaped through generic conventions and language elements across a range of texts, sometimes showing the ability to communicate understandings using organised, supported responses.
  - Limited ability to analyse, interpret and critically evaluate the ways in which language shapes how we view ourselves and the world, and to provide limited supporting argument.
- Inadequate achievement (0-34)**
  - Inadequate control over some written forms, infrequently showing the ability to communicate with clarity and precision and to suit a range of contexts, purposes and audiences.
  - Inadequate understanding and appreciation of how meaning is shaped.
  - Inadequate ability to analyse, interpret or evaluate the ways in which language shapes how we view ourselves and the world, and inability to provide supporting argument.

Stage 3 units are typically the most conceptually demanding requirement for post-school destinations: university, training providers, apprenticeships and workplace.

Stage 2 units are typically required for post-school destinations: training providers, apprenticeships, traineeships, university and workplace.

Stage 1 units are typically required for post-school destinations: training providers, traineeships and workplace.

P Stage units are typically required for developing skills for leaving school or transition to Stage 1 units.

Issued by the Curriculum Council without alteration or erasure


Curriculum Council of Western Australia

# Statement of results

Students who complete Year 12 will receive a Curriculum Council statement of results. A sample statement and explanation is provided below.

It should be noted that English language competence, if achieved, is only shown if the WACE has not been achieved. Any community service completed is also shown, usually on the second page of the statement of results.

## Sample statement of results



# Curriculum Council

**James Frank Student**  
123 Sample Street  
SAMPLETON WA 6234

**The following have been achieved**  
Western Australian Certificate of Education  
Certificate II Business

**Exhibition and awards**  
Certificate of Distinction (Human Biological Science)

WACE course scores		WACE course score
Year	Course name	
2013	Accounting and Finance (Stage 3)	81
2013	English (Stage 3)	74
2013	Human Biological Science (Stage 3)	86
2013	Physical Education Studies (Stage 2)	54

School achievement in course units		
Year	Course name	Grade
2012	Accounting and Finance (2AACF)	A
2012	Accounting and Finance (2BACF)	A
2013	Accounting and Finance (3AACF)	A
2013	Accounting and Finance (3BACF)	A
2012	Business Services: VET industry specific (1CVBSB)	C
2012	Business Services: VET industry specific (1DVBSB)	C
2013	Business Services: VET industry specific (2AVBSB)	C
2013	Business Services: VET industry specific (2BVBSB)	C
2012	English (2AENG)	B
2012	English (2BENG)	B
2013	English (3AENG)	B
2013	English (3BENG)	B
2012	Human Biological Science (2AHBS)	A
2012	Human Biological Science (2BHBS)	A
2013	Human Biological Science (3AHBS)	A
2013	Human Biological Science (3BHBS)	A
2012	Physical Education Studies (1APES)	B
2012	Physical Education Studies (1BPES)	B
2013	Physical Education Studies (2APES)	C
2013	Physical Education Studies (2BPES)	C

(The total number of course units achieved is 20. See reverse for explanation.)

**Achievement of vocational education and training**  
The statement of results lists vocational education and training completed through a Registered Training Organisation (RTO). Verification of achievements should be made with the relevant RTO.

The following qualifications have been achieved:  
BSB20107 Certificate II in Business achieved through <sample TAFE>

The following competencies, as recognised within the Australian Qualifications Framework, have been achieved through <Sample (1234) Registered Training Organisation>:

2012	BSBCMM201A	Communicate in the workplace
2012	BSBCUS201A	Deliver a service to customers
2012	BSBIND201A	Work effectively in a business environment
2012	BSBINM201A	Process and maintain workplace information
2013	BSBINM202A	Handle mail
2012	BSBITU201A	Produce simple word processed documents
2012	BSBITU202A	Create and use spreadsheets
2013	BSBOHS201A	Participate in OHS processes
2013	BSBSUS201A	Participate in environmentally sustainable work practices
2013	BSBWOR202A	Organise and complete daily work activities
2013	BSBWOR203A	Work effectively with others
2013	BSBWOR204A	Use business technology

**Achievement of endorsed programs**  
The statement of results lists endorsed programs reported by the school. Verification of these achievements should be made with the school.

**Community Organisation Programs**

2012	Duke of Edinburgh WA Bronze Award	Awarded
------	-----------------------------------	---------

**Workplace Programs**

2013	Workplace Learning: Employability Skills	Achieved with merit
2012	Workplace Learning: On-the-job Training	Two programs achieved

(These endorsed programs are collectively equivalent to 5.0 course units. See reverse for explanation.)

**Statement of Results**  
Student Identifier: 19468599/4165  
Date of Issue: 30 December 2013  
Page: 1 of 2

*Confirmation of completion of the WACE if requirements are met*

*Completed vocational education and training certificates*

*Acknowledgement of any Curriculum Council awards*

*WACE course scores achieved*

*Course units completed and grades achieved*

*Vocational education and training certificates and units of competency completed, including the registered training organisation where these were completed*

*Other achievements completed through endorsed programs*

Curriculum Council of Western Australia

# WACE courses and VET industry specific courses

There are 52 courses and 12 industry specific courses in total. Each school offers a selection of these for their Year 11 and 12 students. A brief summary of each course and the syllabus is available on the Council website at [http://www.curriculum.wa.edu.au/internet/Senior\\_Secondary/Courses/WACE\\_Courses](http://www.curriculum.wa.edu.au/internet/Senior_Secondary/Courses/WACE_Courses).

List A (arts/languages/social science)	List B (mathematics/science/technology)
Aboriginal and Intercultural Studies	Accounting and Finance
Aboriginal Languages of Western Australia	Animal Production Systems
Ancient History	Applied Information Technology
Business Management and Enterprise	Automotive Engineering and Technology
Career and Enterprise	Aviation
Children, Family and the Community	Biological Sciences
Chinese: Second Language	Building and Construction
Dance	Chemistry
Drama	Computer Science
Economics	Design
English	Earth and Environmental Science
English as an Additional Language/Dialect	Engineering Studies
French	Food Science and Technology
Geography	Human Biological Science
German	Integrated Science
Health Studies	Marine and Maritime Studies
Indonesian: Second Language	Materials Design and Technology
Italian	Mathematics
Japanese: Second Language	Mathematics: Specialist
Literature	Outdoor Education
Media Production and Analysis	Physical Education Studies
Modern History	Physics
Music	Plant Production Systems
Philosophy and Ethics	Psychology
Politics and Law	
Religion and Life	
Visual Arts	
Workplace Learning	
Other languages available through interstate arrangements	
<b>VET industry specific:</b>	<b>VET industry specific:</b>
Business Services	Automotive
Community Services	Construction
Creative Industries: Art	Hospitality
Creative Industries: Media	Information Technology
Creative Industries: Music	Primary Industries
Tourism	Sport and Recreation

Produced by the Curriculum Council

27 Walters Drive

Osborne Park WA 6017

For more information go to [www.curriculum.wa.edu.au](http://www.curriculum.wa.edu.au).

If you have a query, call 9273 6769 or email [info@curriculum.wa.edu.au](mailto:info@curriculum.wa.edu.au).

© Curriculum Council 2011

